

ANNUAL REPORT 2025



Evangelical
Lutheran Church
in America



A MESSAGE FROM PRESIDING BISHOP YEHIEL CURRY

Dear friends in Christ,

As Lutherans, we are set free to love our neighbors and seek justice. In Colossians 2, we read: "As you therefore have received Christ Jesus the Lord, continue to walk in him, rooted and built up in him and established in the faith, just as you were taught, abounding in thanksgiving" (6-7).

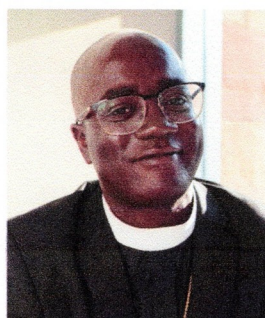
I am abounding in thankfulness for you, church. You are an integral part of this mission as we envision a world experiencing the difference God's grace and love in Christ make for all people and creation. The ministries of congregations including yours, our synods and the ELCA churchwide organization are all working together today and every day so more people may know the way of Jesus and discover community, justice and love. From providing food to people experiencing hunger, to helping train the next generation of leaders that will lead this church, your support is at work here at home and around the world.

Your generosity to each of the three expressions of the church — your congregation, your synod and the churchwide organization — has made it possible for us to do this work

together. Your financial resources, your time volunteering and accompanying others, and your voices are so valued.

As we look ahead to the coming year, I encourage you to continue to walk in Christ, remembering you are rooted and established in faith, and free to love and serve your neighbors. Thank you, church, for the ways you connect with and support our siblings across the ELCA and in our communities.

In Christ,



A handwritten signature in black ink, appearing to read "Yehiel Curry".

The Rev. Yehiel Curry
Presiding Bishop
Evangelical Lutheran
Church in America

“As you therefore have received Christ Jesus the Lord, continue to walk in him, rooted and built up in him and established in the faith, just as you were taught, abounding in thanksgiving.”

—Colossians 2:6-7

Summary of Content

2	Agenda	Mike Franklin
3	Bishop's letter	
5	Council and Staff Directory 2025	
7	Membership Statistics	
8	2025 Annual Meeting Minutes	Nancy Hemming
13	11/23/2025 Special Meeting Minutes	Robin Comforto
15	Council President's Report	Mike Franklin
19	Pastor's Report	Pr. E. Remy Remmers
21	Director of Youth and Family	Shae Richert-Lathum
21	Director of Music Ministry	Bryson Skaar
	<u>Grace Committees</u>	
23	Communications Committee	
24	Finance Committee	Mike Franklin
24	Growing Young Ministry	Shae Richert-Lathum
25	Outreach Committee	Elaine Franklin
	Personnel Committee	Gary Hertel
27	Property Committee	Michael Hadlock
28	Stewardship Committee	Robin Comforto
29	Worship & Music Committee	Sue Davis
	<u>Grace Ministries</u>	
30	Caring Ministry	Marshall Hill-Tanquist
31	Climate Resiliency Task Force	
33	Gather Rivers of Mercy	E. Remy Remmers
33	Grace Gallery	Sharon Rosenkoetter
34	Hospitality Team	Molly Hallgrimson
35	IDA Fund	Office Staff
36	Library	Jody Parker
36	Prayer Chain	Cathy Mueller
37	Quilting/Prayer Shawl Ministry	Linda Samuels
	<u>Ministry Partners</u>	
38	GLC Foundation	Carol Warloe
39	Lutheran Campus Ministry	Hallie Parkins
40	South Corvallis Food Bank	Wayne Kradjan
41	Volunteer Interfaith Caregivers	Cathy Mueller
42	Refugee Support	Gordon Matzke
43	Treasurer's Report	
47	2026 Proposed Budget	Bob Keith

2026 Annual Meeting Agenda

January 25, 2026 @ 12:00 PM

12:00 PM <i>5 min</i>	I. Opening Hymn	
12:05 PM <i>5 min</i>	II. Acceptance of Previous Minutes January 26, 2025 Annual Meeting November 23, 2025 Special Congregation Meeting	<i>Mike</i>
12:10 PM <i>10 min</i>	III. Elections: Congregation Council, Synod Assembly, Camp Lutherwood	<i>Sue Speulda</i>
12:20 PM <i>40 min</i>	IV. Reports Pastor's Report Youth & Family Ministry Report Music Outreach Ministry Report Congregation President Report Committee & Program Reports (Question & Answer)	<i>Pastor Remy</i> <i>Shae</i> <i>Bryson</i> <i>Mike</i> <i>All</i>
1:00 PM <i>10 min</i>	V. Other Topics	<i>All</i>
1:10 PM <i>5 min</i>	VI. Closing Hymn	
1:15 PM <i>2 min</i>	VII. Closing Blessing	<i>Pastor Remy</i>
1:17 PM	VIII. Adjourn	



Oregon Synod



January 2nd, 2026

Dear Beloved of Christ in the Oregon Synod,

Blessings as you gather in the name of the Jesus! My prayers are with you as you seek to continue to do justice, love kindness and walk humbly with your God. As you prepare for all the decisions ahead in your 2026 congregational meeting, God bless you and keep you. In these times of major change and disruption across our nation and our world, I am grateful for our oneness in Christ's liberating love. With courage and compassion, may we be for one another and for others the Body of Christ – living reminders that we are never alone, but always awash in God's peace, justice and grace.

Please save the date and prepare for our upcoming Synod Assembly which will be May 30, 2026. In the spirit of the Prophet Isaiah, we will be trying a new thing this year. This year's approach will mean fewer hours in online Zoom business meetings, which many of you have asked for. So, please keep your hearts and minds open and stay tuned for more information soon!

Our focus in the Office of the Bishop this year is on helping cultivate congregational health and vitality, supporting the unfolding church of the future, creating alignment for our spiritual mission across all of our work and ministry, and building up leaders in Christ who are connected, creative, collaborative, courageous and compassionate.

As in years past, there are a couple of things to consider as you prepare for Synod Assembly 2026:

1) **Voting members.** Please elect voting members who are comfortable with technology, including email, Zoom, Word and Google, and who will actively engage their hearts, minds and souls in all pre-session conversations.

2) **Additional voting members.** If possible, we encourage you to elect “additional voting members” as described in the constitution and rules of the assembly (both which you can find on our website). Additional members can be constituted of: up to 2 people who identify LGBTQIA+, up to 2 people for whom English is not their first language AND up to 2 Youth/Young Adult voting members).

With your continuing prayers, financial mission support and deepening relationships in the name of Jesus, our synod is becoming a shimmering web of relationship, capable of befriending one another, our planet, our scripture and our diverse neighbors with kindness and grace. In so doing, we can become more than we dare dream or imagine, transformed by the renewing of our lives and minds.

I look forward to sharing in this work with you throughout this new year. Let us dare to love one another and walk the Way of Christ’s courageous love together!

Yours in hope,

A handwritten signature in cursive script that reads "Laurie L. Caesar". The signature is written in dark ink and is positioned below the "Yours in hope," text.

Bishop Laurie Larson Caesar
Oregon Synod, ELCA

Council Directory 2025

Congregational Council Executive Committee

Mike Franklin, *President*
Sue Speulda, *Vice President*
Cathy Knock, *Secretary*
Bob Keith, *Treasurer*
Mike Franklin, *Financial Secretary*
E. Remy Remmers, *Pastor*

Congregation Council Members

John Baggenstos
Frank Davis
Angie Gallagher
Mike Franklin
Gary Hertel
Meredith Junge
Cathy Knock
Jaya Conser Lapham
Nate Olsen
Sue Speulda
Robyn Vega

Grace Staff Directory 2025

E. Remy Remmers, *Pastor*
Shae Richert-Lathum, *Director of Youth and Family*
Bryson Skaar, *Director of Music Ministries*
Robin Comforto, *Bookkeeper* (Jan-Aug)
Cobie deLespinasse, *Bookkeeper* (Aug-Dec)
Andrea Barnhurst, *Office Administrator*
Kelsey Bleck, *Percussion*

Grace's Volunteer Video Production Team

Shelly Lundahl Bruce Stephens Mary Stephens

Grace's Video Production Interns

Josh Wright Max Cheskin Taylor Hall

Sunday Nursery Staff

Amy Elliott Jessica Emigh Annikka Howe
Eila Howe Katelin Jensen Moira Riherd
Kendra Wollert

Luther House Staff

Hallie Parkins, *Campus Pastor*
Mary Sabatka Carter, *Interim Office & Hospitality Coordinator* (Jan-Mar)
Alexa Battrick, *Interim Office & Hospitality Coordinator* (July-Dec)

Luther House Student Vocational Interns

Siena Buchanan Madeleine Butler Lydia Dapkus
Nate Olsen

Membership Statistics

Membership end of 2024	435
Members received during 2024	
By Baptism / children	+1
By Baptism / adult	+
By affirmation of faith	+1
By transfer	+6
Members removed from voting membership	
By Death	-3
By Transfer	-
Statistical adj.	-
Membership, end of 2025	440

Pastoral Acts 2024

Funeral/Memorial Services

Kathryn Honey
Kay Larson

Baptism

Kiera Kelly Loftus

New Member/transfers

Mark Bringman
Robin Comforto
Dawn Donato
Kay Harris
Rebecca Lane
Kelsey Lane
Ryan Loftus

Other Rites & Passages

Deaths – Members

Bob Anderson
Kathryn Honey
Kay Larson

Grace Evangelical Lutheran Church Corvallis, Oregon Annual Congregational Meeting January 26, 2025

The Annual Congregational Meeting for Grace Evangelical Church was held in person on January 26, 2025. The meeting was called to order by Council President, Dave Lundahl, at 12:03 pm. It was determined that a quorum had been achieved. The main purposes of the meeting were to review happenings in the church during 2024 and consider the budget for 2025.

Opening Hymn: Bryson led the attendees in an opening hymn: “Lead Me and Guide Me.”

Acceptance of Minutes of the 2024 Annual Meeting: A motion was made to accept the minutes of the January 28, 2024, Annual Meeting. The motion was seconded. There was no discussion. A vote was taken and the minutes passed unanimously.

Vote on New Council Members: The following persons were considered for the Congregational Council: Nate Olsen (1-year term), Mike Franklin (2-year term), Robin Vega (2 of 3 year term), John Baggenstos, Gary Hertel. Dave asked for nominations from the floor. None were made and the nominations were closed. *A motion was made to accept all the persons on the ballot. The nomination was seconded. The motion passed.*

Vote on Other Positions: Other positions filled by election included:

Congregation Voting members to Synod Assembly	Elaine Franklin Kassandra Smith
Voting member to Synod Assembly – Youth or Young Adult	Nate Olsen
Voting member to Synod Assembly – LGBTQIA+	Jaya Lapham
Voting member to Synod Assembly – BIPOC	Holland Smith III
Lutherwood Annual Meeting Representative	Shae Parsons Wendy Geist

President’s Report: Dave Lundahl started his remarks with the observation that things have changed considerably since his term on Council which started in 2019 which included congregation disruptions due to the COVID pandemic. This time included the complete turnover of the church staff during those years. However, church leadership never missed providing an option for Sunday worship despite these disruptions. During most of the pandemic, we had an interim pastor, Pastor Dorthy Neilsen. In 2023, we hired Pastor Remy Remmers. In 2024, Shae Parsons joined the GELC staff as the Youth and Family Ministry director. Dave observed that we not only managed to maintain a church community able to worship together, but we have seen growth with more congregation members worshipping on Sundays (in person and virtually) than in 2019.

Grace also has a healthy mix of members across all age groups. More now than ever,

with the situation in our country, we need to hear God calling us to serve, to reach out to people of all types and ages. We can supply healing, comfort, and love to everyone. Dave is looking forward to the new council and how they will move forward with the goals set by the 2024 Council. He reminded the new members that Council meetings are held on the evening of the 2nd Monday of each month and that their first Council meeting will be February 10, 2025, in person at the church.

Dave said that he was excited that the staff is energized. He thanked the prior Council members and members of the Executive Committee. He said that nothing can separate us from the Love of God. There was applause for the former Council members.

Pastor Remy also thanked the Council members. They said that “Grace is a campground and Worship & Music has lit the bonfire.” The job of past years has been to re-vitalize our church including our committees and other organizations.

They continued by saying that we have a “camp fire” now. Examples are the Bible Study has started on Wednesdays, a Caregivers’ Group has begun, Monday Musings are going strong. In addition, we have an online service which serves over 40 persons each week. We need to make sure we can provide a safe and nurturing space with the current politics in our country. We must help find hope in the world. Some ideas are to have “pop-up” vespers to help people re-connect with God’s Grace. We need to figure out what works and what doesn’t and we need to have courage.

Youth and Family Ministry Report: Shae Parsons thanked the congregation for the warm welcome they had experienced. In 2024, the following events occurred:

- Confirmation: Three youth were confirmed on June 2, 2024
- The national synod Youth Gathering Trip to New Orleans. Pastor Remy and Wendy Geist accompanied the youth. During their time in New Orleans, the youth painted the interior of a bathroom at a predominately Black church.
- Cathy Knock started a Sunday School program for children in the 6 yr to 8 yr range. A new curriculum for that program started last week.
- A children’s Nativity program occurred in Advent.

Shae outlined goals for 2025.

- They want to start a monthly event for children beginning this month.
- A monthly inter-generational potluck
- Some cross-over with Sandcastle, possibly a Vacation Bible School, is envisioned
- GELC wants to collaborate with other churches in building youth programs

Technical Goals

- Create written and standardized protocols for working with children
- Train all those who work with children
- Update planned programs

Logistical Goals:

- Hire rotational Nursery staff

- Create a team of Sunday School Volunteers that would go forward into 2026
- Find new ways to engage children and youth in our community

Major Events for 2025:

- Souper Bowl
- Chili Cook-off

Bryson Skaar's Report on the Worship and Music Programs

Bryson said that music is a strength of our congregation. In 2024, Grace Alive was blessed with musicians who were diligent and hard-working. In addition, "subs" expanded Grace Alive. Grace Alive performed in public at Common Fields in the summer and he expects to expand this program in this next summer.

The choir continues to grow. It won't be featured every Sunday. The goals for the Choir include:

- Maintain existing momentum
- Grow the music program as a whole and provide consistency

The Tech Team, including John Wright, worked in the summer. For next year, we will need to train another person to take his place. Bruce and Mary Stephens and Shelly Lundahl are the reasons we have an online presence. Bryson wants to continue the practice of sustainability.

Bryson wants to continue to host music events at Grace. He looks forward to opening up more to the community at large. His goals are:

- Refine/hone our system and rehearsals
- Fill in, in a logical way

Bryson feels that the music program will generate revenue this year. The committee will be focusing on solutions and opportunities. In the spring and the fall, he envisions having Wednesday noon concerts; some with Bryson and others with guest musicians. He can accompany musicians on either piano or organ. He wants to continue the "hymn sings" at Common Fields in the summer and maybe host silent films at Grace with live music. At the end of the year, he would like to record a Christmas album featuring Grace Alive. This is another idea to generate financial support. Bryson thinks that "we all share in the music ministry."

Dave Lundahl said that 43% of people who worship at Grace are online. From June to now, there have been 127 to 154 worshipping regularly at/with Grace. He also noted that Ron Larson, who will be retiring, has been the chair of the Property Committee since he first accepted the post in 2009. He has done a tremendous job. Ron has always had a vision of what to do and how to do it in any particular situation.

Property Ministry: Carol Warloe said that the Property Task Force was tasked over the past 2 years to come up with recommendations on what to do with the 3 properties owned by Grace, both in the short and long terms. Though the Task Force didn't develop a definitive solution, it did focus on two ideas: 1) use the funds that GELC has to "do something" and 2) provide a service such as providing low income housing. The committee has looked at other low-income developments in the area. They have also

considered other ideas including retail space. Benton County could provide a “medium” amount of financing. HUD also could provide funds. Many of the ideas would require funds to initiate. The Task Force will be disbanded forthwith. Carol thanked the members for their effort.

One of the current buildings is being used from time to time by Corvallis for Refugees. However, with the current political climate, refugees may no longer be entering the US. The agreement with CFR will end in June. Dave said that we should be using the houses for ministry in the future.

Dave said that he wants to continue supporting our staff. He was worried in the fall and early December about the lack of funds coming in from donations. However, by the end of December, the church received a lot of funds from giving. He hopes the church continues to grow and have more funds and be able to use the houses for ministry.

Budget and Treasurer’s Report: Bob Keith presented the proposed budget for 2025. He noted that in 2025, we will have to pay 4 salaries for church staff. We will also have to have funds for maintenance as well as existing and planned ministries. The budget is about 2% higher this year. Mike Franklin wanted to know about how much money is brought in by offerings and building rental. He included Sandcastle, other rentals, and music events. Bob said that, last year, Sandcastle provided \$11,000; this year, it is estimated that their contribution would be \$10,500. The rental properties would bring in between \$13,500 and \$18,000 in 2025. He said that salaries in 2024 amounted to \$126,985 and that, this coming year, it is expected to increase to \$166,526. The insurance for the church has increased and, this year, we will be paying for Andrea Barnhurst’s insurance. And, all utilities as well as janitorial services are expected to go up this coming year.

Pastor Remy said that the staff is looking into online “deals” to help keep expenses as low as possible. For example, they are looking at a non-profit version of Zoom. Jim Leklem asked of the number of giving units had changed. Mike Franklin said that they had, but the number of giving units haven’t so far made up for the loss.

Dave said that Mike looked at the Fall Stewardship campaign and at the congregational history of giving. People tend to give the most at the end of the year. Bob reiterated that December was a very good month for giving. Nonetheless, \$41,232 in contributions was 91% of the previous year and that expenses were 87% of the previous year. Bob said that this allowed us to hire Shae Parsons. He noted that 3 restricted funds for the Youth & Family Ministry were combined into one Youth and Family fund. Jim Leklem said that restricted funds are not usually used for the operating budget in the long term.

Dave stated that the budget numbers hadn’t changed from last year’s numbers. Pastor Remy said that Grace hasn’t been “fully staffed” since 2019. We need to know if we have the momentum and extra boost in funds now and not later. Bob said that salaries account for 48% of expenses.

Dave called for a motion to accept the budget. *A motion was made and seconded. The vote was called for and passed.*

The meeting was closed at 1:20 pm. Pastor Remy gave a prayer and Bryson led the congregation in a hymn.

Submitted by Nancy Bond Hemming
Council Secretary, Grace Evangelical Lutheran Church

**GRACE EVANGELICAL LUTHERAN CHURCH OF
CORVALLIS (GLC)
MEETING MINUTES – SPECIAL CONGREGATION MEETING
NOVEMBER 23, 2025**

The meeting was called to order by Council President Mike Franklin at 11:14am.

Devotions were given by Pastor Remy.

A quorum was declared with more than 40 members in attendance. The purpose of the meeting was declared by the President (to present and discuss two motions regarding the engagement of a 2026-27 intern from the ELCA seminary system). The two motions before the membership were given in synopsis form.

Motion 1 was read by Michael Beachley: “Move that GLC Corvallis engage if available for the 2026-27 intern year an intern from the ELCA seminary system. This to be at an annual cost of approximately \$4,000/month (\$48,000/year) to cover salary, housing, housing expenses and travel (including registration fees). Off-budget funding options to be pursued to minimize budget impact.”

The motion was then seconded.

Discussion ensued, including the importance of bringing in an intern who can thus learn how to serve congregations in Word and Sacrament, serving the wider church in this way. Also discussed were the Growing Young Ministry (GYM) priorities, and the GLC’s inability to write in a set amount of time for an intern to spend on GYM, and the potential problem of yearly turnover and lack of GYM consistency therefrom. Other funding options were mentioned.

After discussion, a vote was taken, and Motion 1 carried with only one opposition and one abstention.

Motion 2 was read by Tom Kiersky: “Move that GLC accept intern placement in either February or June/July 2026 timeframes as determined by availability.”

The motion was then seconded.

Discussion on the second motion included more financial discussion, with words from Carol Warloe about how a Foundation grant would likely work as a one-time offer. After discussion, a vote was taken, and Motion 2 carried with only one abstention.

Pastor Remy closed the meeting in prayer.

The meeting was adjourned at 11:42am

Respectfully Submitted,
Robin Comforto

Voting members signed in and in attendance were:

Gail Bartee	Marshall Hill-Tanquist	Cathy Mueller
Michael Beachley	Meredith Junge	Marna Renshaw
Sandy Beachley	Becky Kiersky	Linda Roberts
Mary Ann Brenan	Tom Kiersky	Larry Rosenkoetter
Denise Cardinali	Ken Kingsley	Sharon Rosenkoetter
Dayle Christensen	Sue Kingsley	Kathy Scroggins
Robin Comforto	Carolyn Kradjan	Kassandra Smith
Dawn Donato	Wayne Kradjan	Bruce Stephens
Kathy Farnsworth	Becky Lane	Mary Stephens
Elaine Franklin	Dave Lundahl	Anita Upenieks
Mike Franklin	Shelly Lundahl	Robyn Vega
Juan Guzman	Gordon Matzke	Carol Warloe
Nancy Hemming	Mary Ann Matzke	Donna Wernz
Jim Hemming	Norma Moody	Jim Wernz

President of Church Council 2025 Report

All powers of the congregation are manifested in the membership of voting members and practiced at the annual and special meetings of the congregation. The congregation council is entrusted with these powers, within carefully prescribed limits, and is responsible for the operation of the congregation between the congregation and special meetings.

It is with honor and humility that I have served as your congregation president this past year. This continues to be a very unique congregation – many of you know that I grew up in this congregation and continued to be a member through 1979 when I moved up to the Portland area. Back in those days, we were a member of the Lutheran Church in America (LCA), one of the precursor bodies to our current Evangelical Lutheran Church in America (ELCA). One of the assistants to the bishop at the time called Grace “an island.” His meaning was obvious, Grace was a quite large congregation at the time, over 1,400 baptized members and very active across a wide spectrum of synodical activities.

Today, in much the same way, we are an island, not as many members but a greater percentage of members very, very involved in a wide variety of programs. Again, back to my past, after moving to Portland, I married Elaine and together we have lived in, besides the Portland area, Baton Rouge, Indianapolis and the Nashville, TN area before coming back to Corvallis and Grace in the middle of Covid in June, 2020. During most of that time, my parents continued to live in Corvallis and my siblings were mostly still in the Willamette Valley so many trips were made back to Corvallis and I maintained contact during that time, keeping aware of activities here. I have been continually amazed by the ways we have been and are present in our community, primarily by social services but other programming venues as well. That is every bit as true today – **READ THIS REPORT! READ WHAT IS GOING ON!** See if you aren't as amazed as I am to see how we are present and serving this community both by ourselves and with our various church and community partners/relationships.

There is no sense repeating here what has been said much better than I later in this Annual Meeting booklet, what our various committees and groups of committed individuals have been doing this year. I would like to start by thanking the dedicated staff and those that have volunteered to assist when there was just a little too much on the staff's plate. The staff includes Pastor Remy, Andrea Barnhurst, Bryson Skaar, Shae Richert-Lathum, Robin Conforto, Cobie deLespinasse and Kelsey Bleck. Each of these people have led us in their own unique style that has allowed us to grow in many ways and has certainly led to the growth in our programming, communication, and participation in that programming.

That brings us to Shae leaving us in February to go with their partner, Skye, to New Zealand to complete an educational program that has been discontinued at Oregon State. Please be sure to thank them for all they have added in their time here. The good news is that we are making plans to welcome an intern in the June/July timeframe. The intern will be with us for a year after arrival. This is an opportunity for Grace to give back to the church as the intern is at or almost at the termination of their

educational process and nearly ready for congregation ministry. We will be an on-site training ground for that ministry making the candidate stronger in their first congregation and also giving us some much needed assistance, especially closer to the end of the one-year term. Please warmly welcome that person when they arrive.

Now, time for a non-paid advertisement: SignUpGenius! That's right. It is our underused online system for signing up to be a Worship Assistant on Sunday mornings. There are places for signing up to be Communion Servers, Ushers, Serve on Altar Guild or be a Coffee Fellowship Server. Yes, some of these activities may have other signup forms but you could greatly help planning, take the load off those responsible for filling the positions and recording who will be doing those functions each Sunday by simply making use of this online tool. There is a direct link to this tool in most general e-mails coming from the church office. Simply click on the link. Find the date (or dates) you are interested in serving and put in your name and follow the directions. It is easy, if you have any questions on how to use it and have an online computer, you can easily learn. Just ask a council member or anyone else you know that is even somewhat computer literate and they can help you. Ask a child!

With our growth that includes both new members and those we lose, mostly by death or moving nearer their children, we continue to increase numerically, a welcome change from just five (5) years ago. That makes these times very exciting and foundational as to where we go/be as a congregation in the future. However, growth costs money. As you have read in the documentation (or will read) and hear at the congregation meeting, we are growing fiscally as well but not quite as our membership and programming demands. Thankfully, we have Grace Foundation with one of its objectives being to promote new ministries. In many instances, that blessing allows us to start new ministries at a fraction of the total cost and then allow the ministry to grow to self-sufficiency.

In addition to ministry, the foundation has been very helpful in helping to fund many other projects around the church – sometimes maintenance, sometimes a new and exciting acquisition. Please think of the Foundation in two (2) ways – 1) How can I further support the Foundation monetarily so that it can increasingly support the congregation – and the community – even extending globally and 2) Think of projects that can be started at Grace (or elsewhere) that fit the calling of the Foundation and use it as a support for beginning a new ministry.

Any such report about Grace would be remiss to not mention the Lutheran-Episcopal Campus Ministry as expressed through Pastor Hallie's ministry at both Luther House and Canterbury House, both near the Oregon State Campus. Most of you know but it bears repeating, while most congregations are the genesis of campus ministries near their location, in Corvallis, the opposite is true. Grace was started out of the ministry of Luther House! Surprisingly, one of the main reasons for each being started was the same. Students in the 1920's and people desiring a Lutheran Congregation in the 1940s both desiring a Lutheran presence that did not speak German in their worship services.

That said, the Lutheran-Episcopal Campus Ministry, while associated with the ELCA as are we and though we were started out of that ministry, we are separate ministries

always searching for ways to work synergistically with each other to further God's Kingdom in Corvallis but within our own niches.

This brings me to two (2) areas of growth that can actually be expressed numerically. The first is simply numerical growth and the second is financial growth. First, numerically – as I mentioned at the beginning, Elane and I moved to Corvallis in June, 2020. When we first arrived, there was Covid and no worship services but when worship reconvened in 2021, we typically had one or two children for the children's sermon (one of my favorite ways of determining a congregation's vitality). Now, we regularly have six or seven, sometimes even reaching double digits. That is growth where the church most needs it, in the younger folks.

The second area of growth is financial. During the fall campaign, you were presented with a graph that showed that for every year since 2018 with the exception of 2021 after Covid and not even considering the effect of inflation, our annual receipts had been declining. In 2025 we reversed that trend and Estimate of Giving Cards returned this year indicate that trend will continue. Thanks be to God.

A final thought on budget, and another interesting personal story – first the budget. Elsewhere in this report, and near the back, you will find the financial reports. There are both the reports for the year just completed and also the 2026 projected budget. This year, like every year since we returned, is a stretch budget, but not nearly as much as in previous years with some outstanding possibilities that may actually easily allow us to surpass even these expectations. I won't go into it here but just to make you aware that it substitutes an intern for the Director of Youth and Family Ministries and it includes further growth in the Music Program. While there is an expectation that with Pastor and an intern, we will be able to give an equivalent amount of time to the "youth" side of the youth and family ministry, it is also true that members (not necessarily just parents) participation will also be required to keep this program growing. We have a great start, Shae will leave us with information to assist in further growth and now all we need is you. Please consider volunteering in this area and by all means, participate as much as possible in inter-generational activities.

The last thought is interesting, at least to me. I graduated from OSU in June, 1969. In January, 1970 I was first elected to Grace's congregation council. What an honor . . . and surprise. At that time, there were two (2) people running for every open position plus possible nominations from the floor which sometimes did come. So, that was just before my 23rd birthday (I would be 23 by the 1st council meeting). This was back in the day of the Viet Nam war and the "word on the street was never trust anyone over 30." Conversely, those of us under 30 were often looked at in the same but opposite way, especially if we were single males which I was. Two years later, 1972, I was elected to chair the council and did that for three successive years, finishing in January, 1975. I've done the math, that is 50 years to the month since I finished that role until I was again honored by being elected to chair it – I'd be willing to bet that must be a record for the ELCA and its predecessor bodies!

Finally, thank you to those that have served on the council this past year and helped to make it a success although we were so blessed to have a whole congregation of volunteers doing much of the heavy work. Those council people finishing their terms

of service and going off the council are Charlotte Chrisman, Meredith Junge and Nate Olsen. Frank Davis' term is also ending but he has agreed to stand for reelection. Continuing on for another year of excitement are John Baggenstos, Angie Gallagher, Gary Hertel, Cathy Knock, Mike Franklin Susan Speulda and Robyn Vega. Jaya Lapham Conser has also resigned from the council which fits into the council's plan to reduce the council membership from twelve elected members (plus pastor) to nine elected members (plus pastor). The reduction will make more "experienced" leaders available for committee work and should aid discussion and decision making at the council. The constitution allows nine to 12 council members so is a non-issue in this change.

I would like to personally thank each of the off-going council members for their dedicated service this past year (and prior years) on the council and look forward to working with each of them in future endeavors. Thank you also to those of you continuing on – another year of "fun" on the horizon! Please take a minute to thank each of these people as you see them in the next few weeks. Let them know how much they are appreciated.

Mike Franklin
Council President

Pastor's Report

Isaiah 43:19 I am about to do a new thing; now it springs forth; do you not perceive it? I will make a way in the wilderness.

Beloved Siblings in Christ,

In 2024 it felt like I was running around the campground helping campfires pop up and getting to know as many of you as I could. In 2025, it's felt like throwing spaghetti on the wall and seeing what sticks. The good and bad news of our Creator is that God is always creating new things. That's good news because no matter what happens, God will be present and in relationship with their creation. That's bad news because being open to change and trying new things can be disorienting, confusing, and exhausting. We have tried so many new things this year and brought back old things in this new time. First of all, I want to express my gratitude for the community of Grace. You have done hard things and you are developing the muscles to continue to try new things. It is not easy and that is how we meet God at work in the world.

Defiant Hope started after Easter and continued through October. Defiant Hope was created to be an alternative space for community acknowledging the pain of the world while being grounded in Hope for the future. We covered topics like DEI a faithful interpretation of the body of Christ, How Christian Nationalism is in opposition to the gospel of Christ, How to talk to your Christian Nationalist Neighbor, and more. Defiant Hope was also a space for evening fellowship events like craft nights, trivia, game night, and more. Thank you to all those who attended and were a sounding board as we came up with programming. Special thanks to Bryson who was my primary co-conspirator in this project. Doing weekly rotating programming for 6 months took a fair amount of energy and time. Defiant Hope was able to reach a different demographic. I hope that 2026 we will be able to structure more evening programming in a sustainable way.

Sabbath is important. My goal for when I've been here 5 years is that no one is on two committees. This goal exists for a couple of different reasons. As people get spread too thin, we burn out our volunteers and they then have to drop most if not all of the projects they've been working on. Life events happen all the time that people will need to step back from responsibilities. When that happens (not if), we will be in a better spot to shift resources and people. For a church of this size we shouldn't need people to be on every committee. By having limitations on what individuals can do, engagement of the whole church goes up by necessity. For the all star volunteers reading this, we are thankful for your service and we want to make sure that you can rest when you need to. To support this council has been working on getting accurate descriptions of what our different committees and task forces are currently doing so that we can re-structure based on our needs and the mission of Grace. For those of you not on a committee, how are you giving your gifts to this community of faith? You don't have to do a lot or everything. If everyone does a little, the burden is light and easily shared.

Wednesday Bible Study has been a joy of mine this past year. We read the Gospel of Luke together. This meant we could dive into the text in a way that we don't have time for on Sunday morning during worship. We got to reflect on the larger themes of Luke and see the arc of the story. Feeling like the world as we know it is ending we joined

the tradition of hope by reading Revelation together. Many books of the bible can be challenging to read alone especially the book of Revelation. This book is not about how the world will end tomorrow, but rather that our God is a God of mercy that will always be in relationship with us working to make the world reflect and be the kingdom of God that values the lives of the poor, the oppressed, the hungry, and the widow.

The wonderful thing about the Lutheran tradition is that we believe the local context matters. Our structure is very grassroots oriented instead of hierarchical. There are actual few things that the synod or bishop can “order” us to do but rather they make suggestions based on the larger picture that they are attending to. This gives us the wonderful freedom to feel the call of the Spirit right here in Corvallis. Where is God calling us? Where is God already at work asking us to join in? This is why I have such a passion for liturgy and writing liturgy that is contextual for here in this place. We have wonderful traditions and they are so much more meaningful if they are in the “tongue” of the people here. Luther was a big proponent of this and translated the bible into the common tongue.

This year we changed the times of the Christmas Eve services because we added a new service that was targeted at young families. Since I have gotten here you have reminded me and asked me to prioritize the growing young initiative. This doesn’t mean that young people matter more than old people. It means that we have a wonderful tradition that is worth sharing and being in relationship means being open to change. An Intergenerational community is a thriving community. To be intergenerational we have to meet young families where they are. Our Sunday morning liturgy is not really accessible to children. For the Family Christmas Eve service, I rewrote the liturgy to balance being accessible while still being grounded in tradition. This meant before certain sections explaining what we were about to do so people knew how to participate and changing the words so that they can be understood. This service had many call and responses and participation was highly encouraged. To our surprise more people came to this service than we planned. There were 60 in attendance and most were people we did not know. We had to print more bulletins and we didn’t order enough candles. The message of Jesus being born among us and choosing to hope even when it is hard was shared. After the service, people stayed to talk with me and explore our building. Wonderful things are happening here.

This past year we voted to host an intern. We have gotten word that the start date will be this summer. We do not know at this time who will be our intern. This intern will share the wonderful things they have learned in seminary. The intern will teach us and we will teach the intern. The intern will learn from us and we will learn from the intern. To be a teaching congregation is to be a learning congregation. As we learn together let us have grace, for that is our namesake, grounded in the love of Jesus Christ.

Peace and Blessings,
Pastor Remy

Director of Youth and Family

Hello everyone!

I cannot believe that over a year has passed since I first began at Grace. In this year, I have done so much growing, learning, and relationship building with the Grace community. I have been blessed with so much support, both organizationally and personally, throughout this time. I am grateful for all of the hands that helped put the big ideas of GYM into motion and allowed for such a successful year of ministry. Because of all of the volunteers and donations made, we were able to grow our number of families who regularly attend as well as reach out to new families in the community. I am most thankful for the support that allowed us to do this in a way that was equitable and giving to those who most needed it.

Although I am now moving into a time of transition, I still hold Grace as a high priority until my leaving this February. We are working on ways to preserve the information we have gathered over this year to ensure the smoothest transition possible. This includes documenting as much as possible, as well as cleaning and organizing the space and supplies needed for the Children and Youth ministries to continue to set them up for success. I hope to remain in contact with the congregation of Grace for long after I leave. Now is such an important time to build community and relationships with young people in Corvallis and I believe Grace is moving in the right direction to keep our momentum going. I wish you all the best in the years to come and hope to keep in touch.

Many Blessings,
Shae Richert-Lathum

Director of Music Ministries

It is my pleasure to report on the 2025 Grace Lutheran music ministry. Our music at Grace continues to joyfully develop. We embrace change, expand and explore further outreach, and are appreciative of the consistency in our seasonal proceedings. In this report I'll be highlighting the developments in 2025 and the consistent support we receive that enables progress.

Grace Alive!, the Grace Tech Team, and the Grace Choir make up the bulk of our weekly music ministry operations. Grace Alive! dutifully rehearses and prepares worship music for Sundays, holidays, and midweek/special services. They communicate well, they adapt to new systems, they comprehend and organize effectively independently and as a group, and they do all this with joy and faith. Grace Alive! is happy to welcome musicians and guests interested in worship music anytime.

The Grace Tech Team continues to operate efficiently each week. Bruce and Mary Stephens alongside Shelly Lundahl coordinate with workers Josh Wright and Taylor

Hall to make sure our streaming and sound needs are covered regularly. They operate with integrity, often silently solving dozens of problems to keep things running smoothly. There is always more to learn and teach in the tech area and I encourage anyone curious about the inner workings of hybrid worship to chat with the team.

The Grace Choir continues to build momentum this year with a majority of returning members. Rehearsals are fun as we build confidence in our singing and musical abilities. We enjoyed collaborations in 2025 with other church choirs, both for Good Friday and for our Labor Day service in the Park. The Grace Choir is an accessible way to explore worship music and our rehearsals are always open to newcomers.

The Grace Sanctuary continues to host outside music guests and ensembles. In 2025 we once again hosted piano recitals, vocal recitals, and choral performances. Our summer hymn sings continued at Common Fields and we are scheduled to return in summer 2026. The Wednesday Midday Concert Series had a successful launch this year with 19 total concerts. Our Spring series ran for 10 weeks and the Fall series for 9 weeks. We hosted solo pianists, guest vocalists, Flute Cocktail, the Oasis Ensemble, a silent film performance, and more. Bryson played a total of 11 programs to launch the series and enjoyed the diversity he programmed himself with. Bryson debuted 2 original romantic/classical solo piano compositions for the Spring series and composed his first music liturgy that we used for worship from mid-August through November.

We are grateful that the music ministries at Grace continue to flourish thanks to the support of our community and members. In 2026 we will continue to grow upon the successes of 2025. The concert series has gained traction and was awarded a new ministries/outreach grant to help expand in 2026. We will additionally be programming evening concerts in 2026 for those not able to attend the midday series. Grace will release a holiday album next Winter to kick off the season that is currently in production. We knew there would be challenges to 2025, and many of the same challenges lie before us in 2026. We will respond to those challenges similarly with our commitment to community, faithful service, and sharing our joyful sound. We hold Leonard Bernstein's words, *"This will be our reply to violence: to make music more intensely, more beautifully, more devotedly than ever before."*

Thank you for the continued support, sincerely,
Bryson Skaar

Grace Committees



Communications Committee Report

Communication committee has been taking some intentional time for Sabbath and restructure. We are thankful for the years of service of Bob Keith leading this committee. Leading this committee through the pandemic required creativity, curiosity, and a whole lot of hope. The communication committee is filled with talented, amazing volunteers that are spread thin. After taking an intentional pause, Pastor Remy has been convening this committee.

A church website is the new front door to the church. Most of our new members this year said they found us online and watched a few services before ever setting foot in our doors. We also live in the most secular county in the most secular state in this country. It is a necessity to have a church website that uses language that the people around us understand. It is advantageous for us to take the time and make sure that our language is accessible to our target audience, our neighbors that live around us. Since reconvening, the communication committee's primary focus has been updating the website. Members looked at local and nonlocal church websites from a variety of denominations to see what features would be an appropriate addition or change to our current website. The goal is not to completely create a new website, but to adjust our current website to add or remove pages, features, or language that will fit our current purpose of our website. Committee members also explored our website and discovered areas of our website that were in need of updating.

Goals / Projects for 2026

- **Continue work on the Website:** Make sure the language is accessible to those that are not familiar with Church Language. Balance having posts that are up to date without having to update them every week.
- **Name Tags:** Make sure everyone has a name tag. Clear out name tags from people that are no longer here.
- **Directory:** Our online directory needs an additional push to get people registered. Then the maintenance work of adding people as they become members is easier.
- **Photos:** Up to date photos for the fireside wall and for the online directory.

Finance Committee

The Finance Committee met monthly throughout the year. During this meeting, the monthly financial data from the bookkeeper/treasure were reviewed prior to presentation to the congregation council.

In addition, the Finance Committee through a specially selected budget committee is responsible for developing and presenting a budget for the next fiscal year to the Council that can then be presented at the Annual meeting in January.

Members of Finance Committee this year have been Jeff Beck, Mike Franklin, Bob Keith (Treasurer), Wayne Kradjan, Gordon Matzke, Pastor Remy, Carolyn Warloe, Robin Comforto (ex officio as bookkeeper and also as member), Cobie deLespinasse (ex officio as bookkeeper).

Growing Young Ministries Committee

Members: Shelly Lundahl, Mary Ann Matzke, Jaya Conser-Lapham, Cathy Knock, Shae Richert-Latham, Kendra Wollert (Jan-October), Kelsey McElfresh (November-Current)

Meeting Schedule: 1st Monday of the Month at 6pm, rotating in-person and Zoom (generally)

Report: GYM has had a busy and productive year! We have maintained a focus on growing the children, youth, and family ministries at Grace while creating long lasting relationships between the attendees. This has been done through Sunday School, regularly scheduled events such as Discovery Days, one time events such as VBS, churchwide fellowship events, and monthly intergenerational potlucks. Many of these events have been done in collaboration with other committees, groups, and staff members.

Sunday School: Our Sunday School year runs September through June, following the public school calendar. In 2025, we ran approximately 35 mornings of Sunday School. The 24-25 school year had an average of 5.5 children attending, with 25-26 having similar numbers as of November. Sunday School has been led by Cathy Knock, Cathy Mueller, Wendy Geist, Charlie Zichterman, and Shae Richert-Latham. For the 25-26 school year, we moved to a lectionary based curriculum. During Advent, we co-led a special Advent curriculum for both adults and children. We were also able to clean and reorganize the craft closet with a group of volunteers, which was much needed.

Regular Events: Our two regularly scheduled events included our Discovery Days and our Intergenerational Potlucks, each running once a month. We were able to run 8

Discovery Days, focusing on providing a meal to our families and providing fun programming to the children that educated about God through various themes. We averaged 6.4 children at these events. We held 12 potlucks, including 3 Potlucks in the Park over the summer and several special event potlucks such as Graduation Sunday, Advent Wreath Making, and the Chili Cook-Off in collaboration with the Men's group. These were well attended, with over 30 members for each event, sometimes many more.

Special Events: Our largest one time events included our Trunk or Treat, our Summer Baseball and Birding Hike fellowship events, and our Nativity Service. Through these events, we were able to build relationships and trust in the greater community, as well as provide food at some. Our Trunk or Treat saw nearly 250 people come through our parking lot, feeding over 100. The other events listed helped us grow in fellowship within our congregation, focusing on community rather than education.

VBS: Our largest event of the year was our Vacation Bible School. This ran for 5 days and served 21 children ages 2-12 from the community, providing programming and a meal for 4 hours a day. This event had both paid and scholarship registration options, with about 50% of the children coming on scholarship. This was graciously covered by members of our congregation. Each day provided the children a chance to play games, make crafts, serve in a mission project, and learn about God in a small group setting. We relied on the creativity and willingness of 10 volunteers, who this event would not have been possible without.

Overall: This year has been a year of growth and education for both the children we serve and those of us who have led them. While we are still determining what the next year will look like, we are thankful for the church's support as we tried new things and kept old traditions. Numbers do not dictate success, however are helpful in validating that this programming has been helpful in growing our community. We look forward to a new year and new opportunities to continue our ministry.

Outreach Committee

Mission: To Meet the Needs of Our Neighbors in the Name of Jesus

Members: Denise Cardinali, Frank Davis, Elaine Franklin, Angie Gallager, Wendy Geist, Meredith Junge, Jaya Lapham, Dave Lundahl, Mary Ann Matzke and Sharon Rosenkoetter

2025 has been a busy year for Outreach

Souper Bowl of Caring was in February

Sack Lunches

50 sack lunches are made up every month with 10 lunches delivered to Vina Moses every Monday

Stone Soup- lead by Frank and Sue Davis

We continue to prepare dinner for around 140 folks every third Sunday of the month at Corvallis First Christian Church. Stone Soup continues to amaze us, in the fact

that a hot meal is served every day of the week, each meal has a volunteer preparation group, a volunteer server group and finally a volunteer clean-up group. Other than the Kitchen Manager and a couple of part-time folks, this feeding organization is all volunteers! Our volunteers include, Sue and Frank Davis, Elaine Franklin, Judy Butler, John Baggenstos, Jude and Wendy Geist, Laura Gunther, Tom Kiersky, Mary Ann and Gordon Matzke, Kathy Scroggins, Holland Smith, and Marshall Hill-Tanquist.

Albany Pride Day-Organized by Wendy Geist

This was held in July and Grace joined more than 60 other booths at the event. Pride stickers and beads were handed out; a bus of dreams was provided where people recorded their wishes and dreams on stickers.

A quilt made by Grace's quilting group in the colors of the Trans Pride flag was raffled off with the proceeds going to The Trevor Project, a crises hotline for LGBTQIA2S+. \$55 was collected which was matched 5x by The Trevor Project for a total donation of \$330.

Thank you to the volunteers and staff that worked to make this happen: Kassandra and Holland Smith, Cathy Knock, Kendra and Ed Wollert, Nancy Hemming, Shae Richert-Latham, Sharon Rosenketter, Pr. Remy Remmers, Denise Cardinali, Andrea Barnhurst, Frank Davis, Wendy Geist, Marshall Hill-Tanquist, and Grace's Sewing and Quilting group.

Backpacks for Garfield

This July/August project has been ongoing for at least 20 years and for many years has been coordinated by Denise Cardinali.

Back to School supplies for Vina Moses

Winter Clothing Drive for Vina Moses in October

Giving Tree for Vina Moses in December

Food drive for Jackson Street Youth Services in November

Luther House

Supper every 2nd Sunday of the month

Potato Bar at Spring and Winter final time

None of these outreach programs would be possible without the generosity both monetarily and with time by the members of Grace. So, I as chair of the committee and the committee member wish to thank everyone for helping these programs be the success that they were.

Elaine Franklin

Property Committee

Members: Jude Geist, Frank Davis, Cathy Mueller, Carol Warloe, Tom Kiersky, John Baggenstos, Nate Olson and Michael Hadlock

Meeting Schedule: Fourth Tuesday of each month at 6:45 PM.

The mission of the committee is to maintain the church property as an inviting place to worship in a sustained cost-effective manner to enable our church to serve its mission in the community.

1. Ron Larson stepped down as property committee chair. Ron has historically been an integral part of property committee.
2. Basement Leak Mitigation Project was completed early 2025. This project resealed the basement walls under Ronnenkamp Hall and added drainage to help remove water and lower the water level below basement level. The outdoor area of Sandcastle was reconstructed following the project making more user friendly and assisting in sloping the landscape for drainage away from Ronnenkamp Hall.
3. Annual Spring Cleanup was completed April 5th with help from the congregation. While the purpose of the event was to clean up both the interior and grounds of the church property, one of our goals was to make spring cleanup a congregational event to bring people together. We feel the event was positive and successful. The following tasks were completed.
 - a. Exterior: Weed gardens; Clean up ground cover; Finish pruning roses and picking up rose stems; Trim evergreen border back off sidewalk; Trim Heather back off sidewalk
 - b. Interior: Cleaning Floors & Carpets; Clean out and Vacuum Pews; Clean Windowsills & Dusting Stain Glass Windows; Removing Spider webs; Cleaning Altar; Washing Entry Windows and Doors
4. Big thanks to our volunteers who keep our ground looking nice. Members of our committee and congregation volunteer their time to mow the grass, edge the grass, trim the roses and bushes and pull weeds from the beds around the church. The church grounds are large, the efforts required to keep the ground require many hands which is much appreciated.
5. Carpets in Ronnenkamp hall will be cleaned *Carol and Tom* with their personal carpet cleaners.
6. Completed our Scheduled & Periodic Tasks that serve as preventive maintenance to protect the church property from serious damage and costly repairs, or impacts the church being forced to close for a period of time.
7. Completed Phase 2 of the Memorial Courtyard Project to accommodate an updated bell tower. This project extended the paver area to better utilize courtyard space and primed placement for the new belltower.
8. Seismic Load and foundation analysis is underway for the new church belltower. Once analysis is complete, construction of the new belltower will begin.
9. Need to contact an agent to ensure property insurance is properly specified.

Stewardship Committee

The stewardship committee has largely been on hiatus this year, awaiting reorganization. Lack of personnel being identified that are willing to serve is one of the primary reasons the council has been actively pursuing a constitutionally allowed reduction from twelve (12) to nine (9) elected members. This should provide additional folks in the congregation to serve in the Stewardship and other standing committees.

The Stewardship Committee at various times during the year consisted of Robin Comforto, Mike Franklin, Dave Lundahl, Pastor Remy, Holland Smith and Carolyn Warloe.

Date Published: 01/01/2026	
No. of Estimates Received:	59
No. of New Estimates Received:	10
Total of Estimates Received:	\$238,004.00
% of Previous Year Total Estimates:	104.4%
Average per Estimate Received:	\$4,033.97
Increase/Decrease for Same Giver	\$19,056.00
Increase/Decrease Avg. per Giver:	\$388.90
Last Year's Total:	\$227,988.00
Total No. of Last Year's Estimates	61
\$/Estimate:	\$3,737.51
Individual Maximum Increase/Year:	\$4,600.00
Maximum Decrease:/Year	-\$3,600.00
No. Estimates Increasing:	27
No. Estimates Decreasing:	8
No. Estimates No Change:	14

The principal accomplishment of this group, primarily due to the efforts of Robin Comforto, was the Fall Stewardship Campaign.

The results of the 2025 Fall Campaign are summarized in the adjacent table. While we had two (2) fewer returned "Estimate of Giving" cards this year, the total of those received estimates was an increase of a little over \$10,000, an average of almost \$400 per year for those returning a card both last year and this year.

The results of this campaign as well as estimates for others not returning cards and sources of other income were forwarded to

the budget committee for the development of the 2026 calendar year budget.

Thank you to all that have served on this committee during 2025. It is anticipated that in 2026 this will once again become a year-round, functioning committee.

Your Stewardship Team

Worship and Music Committee

Committee members: Bryson Skaar, Pastor Remy Remmers, Charlotte Chrisman, Becky Kiersky, Shelly Lundahl, Dave Lundahl, Cathy Mueller, Linda Samuels, Bruce Stephens, Mary Stephens, Sue Davis

The Worship and Music Committee meets the first Tuesday of each month at 7 pm via Zoom.

Worship at Grace is definitely a team activity and thanks to the gifted and dedicated folks on this committee, congregants can be assured of a well-planned and meaningful service each week.

Altar Guild: Led by Linda Samuels, with special thanks to those who assist with communion preparation – Marshall Hill-Tanquist, Sandy and Michael Beachley, and Frank Davis. Linda leads volunteers who prepare and decorate the sanctuary for festival Sundays, holidays, and special seasons. Joining altar guild is a great way to serve behind the scenes for the enjoyment and appreciation of everyone. Becky and Marna Renshaw do a wonderful job of providing and arranging flowers for our services and our beautiful courtyard.

Tech Team: Bruce, Mary, and Shelly keep us connected with livestreaming for worship and posting the services on YouTube just in case you missed a Sunday. They are assisted by our interns, Josh Wright and Taylor Aria Hall. Max Cheskin graduated this spring. Bruce did a fair amount of rewiring this year to accommodate the new in-ear monitors used by the musicians. This enabled us to remove the floor monitor speakers and cables making moving around safer. The team also created a prayer request QR code that opens an email so anyone can send a request before or during the service.

Ushers: Becky continues to schedule ushers and welcomed several new ones this past year. Ushering is an important part of the hospitality we extend ourselves and our visitors.

Readers: Cathy coordinates readers for all our services which is one of our hallmarks of “hearing the word”.

Music: Bryson, our very gifted director of music, was very busy this year. He started the midweek concert series for the spring and fall which is off to a great start. Look for it to begin again April 1, 2026. We had three hymn sings at Common Fields during the summer months. Bryson’s biggest accomplishment was composing With Open Hearts liturgy which was used for the season after Pentecost. It debuted August 17th and is a joy to sing.

Worship: Pastor Remy continues to introduce new and creative elements into worship. Defiant Hope on Wednesdays is a relaxed worship experience for those who are curious or are unable to attend on Sunday. The time is alternated with fun community building activities like Trivia night as an example. Lenten soup suppers and

services were shared with First Presbyterian once again. Holy Week services were shared with First Christian Church and First Congregational United Church of Christ, First Methodist Church, and First Presbyterian Church. The Labor Day service in the park was well attended by 272 folks! Pastor Remy led the organization of it with the progressive congregations in Corvallis participating.

We are truly blessed to have dedicated individuals who commit to making our worship gracious and meaningful week after week. They genuinely deserve our gratitude.

Respectfully submitted by Sue Davis, chair

Grace Ministries



Caring Ministry

The Grace Caring Ministry program provides home visits to church members who have a difficult time attending in-person worship. Our goal is to visit with people 1 to 2 times a month to help people feel connected to our church community.

Some of us have also received training to provide communion. We can make hospital visits when we know that someone is in the hospital. And we send out the monthly "HomeTouch" mailing to those interested.

If you would like a visit, know someone who would, or would like to be a visitor on this caring team please contact the church office.

Marshall Hill-Tanquist

Climate Resiliency Task Force

Summary of Grace Lutheran Climate Resiliency Task Force Considerations:

- **Purpose & Context:**

Johanna Lundahl's report is a blueprint for Grace Lutheran Church (Corvallis, OR) to become more climate resilient and reduce its greenhouse gas (GHG) emissions, both by adapting to and mitigating climate change on its property and within its community. The church owns a full city block, including buildings and homes, making it well positioned to influence local climate resilience.

- Following the release of the report, a committee formed to move forward with planning and priorities. This document summarizes the report recommendations and the committee's early priorities.

- **Climate Risks & Local Impacts Context:**

Corvallis and Oregon face increasing extreme heat, drought, reduced snowpack, streamflow impacts, wildfires, and air pollution from smoke. By late century (2100), local summer temps could rise by 5–9°F, with the number of days >95°F rising from historic 4 to potentially 13–30 days per year depending on emission scenarios.

- **State, City, and Institutional Goals:**

The church does not currently have a Climate Action Plan, but this work would align well with regional goals. Oregon targets: 45% GHG reduction by 2035; 80% by 2050 (vs. 1990 levels). Corvallis aims for 75% reduction by 2050. New state building standards will require energy audits and upgrades for large buildings (equivalent to Grace Lutheran) starting 2028.

- **Utility Use & Emissions:**

The church's direct emissions mainly come from natural gas furnaces (heating)—about three times greater than electricity emissions. Electricity averages 25,217 kWh/year; water use has dropped sharply in recent years. Only emissions from buildings/utilities were considered; emissions from travel, food, and other operations were excluded.

Recommendations:

Decarbonization Actions:

- Efficient building design for any new or renovated spaces, prioritize passive solar, battery storage, green building standards (e.g., Living Buildings Challenge).
 - Switch space heating to air source ductless heat pumps.
 - Install rooftop solar and battery systems to cover all electricity needs.
 - Replace appliances and windows for energy efficiency; use energy budgets/zoning.
 - Participate in renewable energy credit programs, electrify cooking & vehicles, consider community-wide decarbonization efforts.
 - Practice community food-waste composting; help members access GHG reduction resources.
 - Establish a community GHG inventory to track progress.
- **Climate Resiliency Actions:**
 - Invest in green stormwater infrastructure (e.g., buffer strips, swales, permeable surfaces).

- Upgrade landscaping: native plants, rain gardens, food gardens, tree canopy protection.
- Create sheltering spaces for extreme weather (heat/wildfire/cold/smoke).
- Strengthen community connections; center people and place-based “creation care.”
- Recognition and partnerships for environmental justice and Indigenous land practices.
- Begin collaborative, community-led climate adaptation planning.
- **Featured Design Considerations:**
 - Model future development on high-performance buildings.
Size and feasibility of rooftop solar: studies suggest it could cover 100% of annual electricity need, but feasibility study required.

Conclusion:

- Resilience is both mitigation (reducing emissions) and adaptation (preparing for climate impacts).
 - Grace Lutheran could be a template for climate-positive action among faith communities.
Action is urgent; infrastructure investments must prioritize long-term climate realities.

Gaps & Areas Needing Further Attention:

- **Feasibility Studies:**
 - Solar, battery, and heat pump recommendations require engineering/ structural feasibility assessments.
- **Implementation Challenges:**
 - Recommendations are still conceptual - prioritization, phasing, budgeting, and decision frameworks still need to be determined.
- **Community Engagement:**
 - Recommendations for Indigenous partnerships and community-based climate planning are presented, but actionable next steps and process design are needed.
- **Ongoing planning and evaluation required:**
The committee is still identifying priorities and goals and feasibility, but is excited and engaged.

Conclusions:

Johanna Lundahl’s report is a solid foundation for Grace Lutheran’s climate resiliency journey, outlining strategic goals and conceptual actions for mitigation and adaptation. The next steps for the committee and congregation include:

- Develop a full Climate Action Plan, including a complete baseline emissions inventory.
 - Conduct detailed engineering and financial feasibility studies.
 - Engage the full congregation/community for collaborative planning.
 - Build mechanisms for accountability, ongoing tracking, and iterative evaluation.
Deepen partnerships for environmental justice and Indigenous stewardship.

Gather Rivers of Mercy

Gather Rivers of Mercy started in 2022 before I got here when Grace, Faith, and Luther House applied for a Gather Network grant. The Gather Network is a ministry of the ELCA to create spaces for young adults to join in fellowship, worship, community, and discussion. This past summer after going to the Justice and Joy conference in St Louis, Shae and I took on the responsibility for managing this project. Gather Rivers of Mercy is a young adults of faith group for the MidWillamette Valley. It has loose ties to Grace and will continue to expand in reach.

Young adults of faith are becoming less and less common. There are many reasons for this. Young adults have less buying power than their parents' had at their age. If money feels like a barrier to participate, young adults are less likely to participate. The grant that we received from the ELCA has been making attending these community events accessible. It can be incredibly intimidating walking into a new space where there aren't many people that look like you. This means the young adults that are confident enough to walk into our doors are rare for their age group.

Having an age specific group that removes the cost of participating is incredibly important to build community. This is a brave space where young adults can share their faith, their doubts, ask the questions they've always wanted to ask. This is also a space for fellowship and meeting other like-minded young adults.

Throughout this fall we've met for pub theology in Albany and in Corvallis. Meeting after Church has made it easier for our young adults with children. There are about 17 young adults that have either been a part of these pub theology or asked to be on the distribution list to know when the next event is happening.

We have applied for another grant from the ELCA that will fund this program at least for another year. We are excited for bible studies on a variety of hot topics and possibly organizing a trip to Holden in the near future.

Peace,
Pastor Remy

Grace Gallery

Grace Gallery brightens the space in Ronnenkamp Hall with exhibits of creativity by Grace members or others. Exhibitors this year have been Jim Wernz, Marjorie Kinch, Larry and Sharon Rosenkoetter, and Linda Burt. Thank you for sharing!

We look forward to more and varied displays during the coming year. Please contact Sharon Rosenkoetter to volunteer or nominate a favorite artist.

Hospitality Team

Grace's hospitality team includes Anita Upenieks, Becky Kiersky, Kathy Scroggins, Laura Gunther, Linda Noland, Linda Roberts, Linda Samuels, Marna Renshaw, Meredith Junge, and Sue Davis also known as the Worker Bees. We get much needed assistance with heavy lifting from Tom Kiersky and Frank Davis.

CELEBRATIONS:

Carol Erickson's 90th birthday on April 13, 2025, in Ronnenkamp Hall hosted by Carol's daughters. The room was artfully decorated with colorful flower arrangements. Lunch was served after church which included curry chicken salad sandwiches on croissants, vegetarian sandwiches, assorted cheeses, crackers, and fruit. Chocolate cake was served and Carol got her favorite – carrot cake. A sparkling cider toast was made by Carol's daughter, Laura, followed by everyone singing happy birthday. It was a joyous occasion.

MEMORIAL RECEPTIONS:

On March 8, 2025, a reception was held for Kathryn Honey in the Fireside Room. Kathryn was a talented watercolor artist and her family brought many of her pieces to display. Cookies, punch, and coffee were served.

On September 13, 2025, a reception was held in the Fireside Room to honor Kay Larson, a long time and beloved member of Grace. A fall color scheme was chosen. Cookies, punch, and coffee were served.

COMMUNITY CATERING:

We were asked again to cater the annual Volunteer Interfaith Caregivers Pastor and Volunteer luncheon on October 28, 2025. The menu this year was BBQ chicken sandwiches, macaroni and cheese, coleslaw, pumpkin bars with cream cheese frosting, apple cider punch, coffee, and tea.

The hospitality team strives to make every event special and unique. We have a lot of fun working together and thank you for letting us serve you, be it through our ministry to people grieving, celebrating, or any other time we can be of service.

Ida Fund

Thank you to everyone who contributed to the Ida fund this year. Either through direct donations or the bottle drop bags. Ida Igrens-Moller was a member of Grace Lutheran Church who had a heart for people who were in need. To honor her giving spirit, the congregation named a fund in her honor to help with little financial emergencies. In other congregations, sometimes this fund is called the Pastor's discretionary fund to have a way to help those who need support without having a committee that needs to meet to approve spending. It is an honor that we remember our ancestors of faith to remind us to be generous.

This fund gets supported by direct donations, special collections, and the bottle drop bags. The bottle drop bags are located in the entryway. When these bags get dropped off at the bottle collection centers, the proceeds go into an account that is then transferred to the Ida fund.

Because the church office is only open on Mondays and Thursdays, the decision was made in 2024 that we would shift to primarily collaborate with the Benton County Emergency Assistance Coalition. Members include: Vina Moses, WeCare, MidWillamette Trans Support Network, Grace, St Vincent De Paul, St Mary's, and Casa Latinos Unidos. This means our partners will handle the intake process and then split up the bill between our organizations. This allows for those in need to have a more streamlined support where they can go to and receive needed support.

This year we directly helped 17 households with their utility bills. During the SNAP crisis we also purchased 10 x \$50 grocery gift cards that were distributed to the community.

Ida Fund Financial Summary:

Beginning Balance:	\$2,754.16
---------------------------	------------

Total Deposits:

Bottle Drop Donations	\$1,075
Other Donations	\$4,882.07

Total Outreach:

Emergency Assistance	\$4,584.54
SNAP grocery cards	\$500

Ending Balance:	\$3,626.69
------------------------	------------

William E. King Memorial Library

Grace Library members are: Linda Samuels, Jody Parker and Wendy Geist. We meet on the 2nd and 4th Wednesday of the month and have quarterly meetings by zoom with the Mid-Willamette chapter of the Pacific Northwest Association of Church Libraries, PNACL. We also have an Annual Conference, now named "Retreat" at the end of June with the parent organization of PNACL. That organization has chapters from British Columbia, Washington, Idaho and Oregon.

The Grace Library Committee processed 70 books this year. That is-cataloged, labeled and shelved. We use Library Thing software for cataloging. Wendy created a new Bulletin Board.

We also had a table at the September rally. We supplied bookmarks and several new patrons checked out books at the rally. The bookmarks also go to the GELCO bags.

Books have been stored in boxes in the downstairs sewing room. For the remainder of the year we will sort through them. Keep what we want and donate the ones we don't need. These books we keep will be cataloged next year.

For the 2025 conference, Grace Library did not send a representative. We hope to send two people to the 2026 Retreat. The Mid-Willamette Chapter and Salem Chapter are hosting the 2026 Annual Retreat and we have been planning this year for it.

Respectfully Submitted by
Jody Parker

Prayer Chain

Prayer Chain--The e-mail prayer chain has over 150 members. When a prayer request is received it is sent out to the e-mail prayer chain list. In 2025 about 85 prayer requests were sent out. If you would like to be a part of this ministry please contact Cathy Mueller, Bruce Stephens or the church office. If you have a prayer request to send out please e-mail the request to Prayers@grace97330.org and it will be sent out.

Quilting/Prayer Shawl Group

Members: Cynara Stadsvold, Cathy Mueller, Adele Neukomm, Nancy Strolein, Linda Noland, Linda Samuels, Sharon Rosenkoetter, Marna Renshaw, and maybe you?!?

We have always been known as the Quilting Group but we don't actually quilt anymore. Anyone who can cut a straight line, tie a square knot, pin and/or sew a blanket edge, or just come and chat with the group would be welcome and capable of helping with this rewarding task!

And we have recently merged with the Prayer Shawl Group!! Some of the small things we make could be used for that purpose and since the numbers in both groups have decreased over the years and we decided to work with other friends, find some new energy, and accomplish great things together!

Meeting Schedule: We get together on the 2nd & 4th Wed of the month at 2pm in the afternoon to avoid interfering with Sandcastle preschool kids and the Wednesday Bible Study group. We meet in the Grace's basement sewing room (go through the music room/preschool play room).

The blankets we make mostly go to Vina Moses here in Corvallis to be given to local families and children in need and some have been sent to LWR to go to families in other countries. The prayer shawls are used mainly for Grace members & friends but occasionally also find other homes.

Please think of us if you have un-needed fabric, thread, yarn, sheets or tablecloths that could be used in our work – or maybe even unfinished projects that we can find new homes for. **And also please consider joining us at our gatherings!**

Ministry Partners



Grace Lutheran Church Foundation

Over the past 30 years or so, the generosity of the congregants of Grace Evangelical Lutheran Church has built an amazing resource: Grace Lutheran Church Foundation. During 2025, YOU have supported:

COMMUNITY

Bell Academy supporting visually impaired youth (Funding source: Storvick Nurse Fund, \$500)

Corvallis Sister City Uzhhorod humanitarian aid (Funding source: Storvick Nurse Fund, \$8,000)

Luther House partial funding of exterior painting (Funding source: Ronnenkamp Fund, \$5,840)

Camp Lutherwood to improve entrance (Funding source: Ronnenkamp Fund, \$6,000)

Parenting class, Sandcastle, matching funds (Funding source: Storvick Nurse Fund, \$507)

CHURCH

Grace at the Albany Pride Festival for supplies (Funding source: General Fund, \$65.98)

Sound equipment for musicians (Funding source: Technology Fund, \$2,822.72)

Financial support for Ali Briskey (Funding source: Storvick Nurse Fund, \$6,000)

Director Parsons "Justice and Joy" conference (Funding source: The Schultz Family Youth Fund, \$100)

Frames for confirmation photos (Funding source: Memorial Funds, \$91)

Synod Assembly 3 attendees (Funding source: Ronnenkamp Fund, \$1113.44)

Courtyard bell tower (Funding source: Ronnenkamp Fund, \$7000)

Defiant Hope outreach (Funding source: General Fund, \$600)

Musician pay (Funding source: Ronnenkamp Fund, \$3,000)

The Grace Lutheran Church Foundation has grown to a market value of \$885,902 as of November 18, 2025. There is approximately \$282,000 available for a variety of purposes. The Foundation allows us to accumulate funds to maintain the organ and piano, support youth activities and trips, and assist with the needs of the community and more.

Foundation Board 2025: Hal Dick (secretary), Shelly Lundahl (treasurer), Carol Warloe (president), Kris Saathoff, Mary Ann Brenan, Jeff Beck, and Michael Beachley. Ex officio members: Robyn Vega and Pastor Remy Remmers. Joy Linn is our Administrative Assistant.

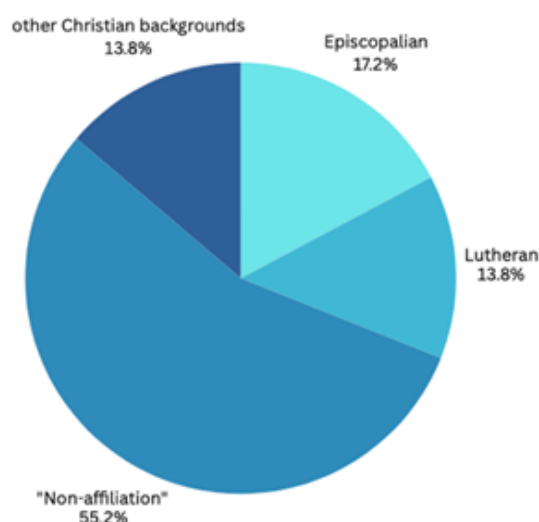
Lutheran-Episcopal Campus Ministry at OSU and WOU

Lutheran-Episcopal Campus Ministry Partnership

Luther House formally entered into a partnership with the Episcopal Campus Ministry at OSU in Fall of 2024 in partnership with the Episcopal Diocese of Western Oregon, including shared pastoral staff, board leadership and the additional use of the Episcopal campus ministry house, Canterbury House. The board, in discernment with current students, is in process of naming the partnership while preserving the names of the buildings Luther House and Canterbury House.

Quadrennial review with Bp. Larson-Caesar, Pr. Clare Yosef-Maier, Deacon Andrew Larson, March 2025

No longer fallow ministry! The review team uplifted the safety, nonjudgemental love, and spiritual encouragement students receive through the ministry. They noted a strong commitment to Lutheran foundations and core identity with an equal commitment to welcome for all (regardless of faith background- or lack thereof), especially when relatively few Christian ministries are LGBTQ+ affirming.



Program Review at a glance:

A weekly rhythm of a Sunday night dinner and worship, Tuesday night "Maker's Space," and a Thursday night WOU-E Lu at St. Hilda's in Monmouth provided the weekly pace and framework for the following programs throughout the year.

Fall 2025

Neighborhood Block
Party with West M. 9/17

Welcome Waggers and
Free Plants at Canterbury
House. 9/23

Watercolor and the
Word. 9/25

Fall retreat. 10/24-26

Free pantry hunger
ministry project. 10/31

Winter 2025

Vocation retreat Oregon
coast. 1/3-5

Silver Falls "church in the
wild pilgrimage." 1/20

Bonhoeffer reading group
2/12-3/12

Watershed walk "church
in the wild pilgrimage."
2/9

MacDunn Forest "church
in the wild pilgrimage."
2/22

Spring 2025

Spring Break Holden
village. 3/23-29

Easter Vigil. 4/19

"On Tyranny" book group.
4/31-5/19

Advocacy Day w/ Oregon
Synod. 4/7

Baptismal remembrance
"church in the wild
pilgrimage. 5/3

Nonviolent
accompaniment training.
5/19

Student participation on Sunday night: 3-25 students

Student participation Maker's Space: 1-14 students

Drop in finals lunches (weekly total): 15-90+

Special thanks to Grace Lutheran members Sharon Rosenkoetter and Wendy Geist for providing the second Sunday meal for students! And to Grace musician Bryson for playing Holden evening prayer on Sundays in Advent!

South Corvallis Food Bank

Participants: Many thanks to the members of Grace who assisted at the South Corvallis food bank in 2025 by stocking shelves and, in some cases, helping distribute food to those in need. Those assisting this year were:

John Baggenstos, Frank and Sue Davis, Marshall Hill-Tanquist, Carol Kamke, Becky Kiersky, Gordon Matzke, and Linda Samuels (who also serves on the Food Bank Board.) My apologies to anyone who assisted and was inadvertently left off the list. **New participants are always welcome!** See me if you want to learn more.

Schedule: Grace Church is scheduled to provide three to four volunteers every Wednesday from 9:00 am to approximately 10:30 am throughout the year to unload pallets and move the food to its proper storage location in the warehouse. An email list is used to communicate with the group and to coordinate scheduling. We are joined by several other “regulars” who are friends of Grace members or other volunteers.

What we do: The South Corvallis Food Pantry is located about ½ mile south of downtown Corvallis at 1800 SW Third Street and is part of the larger Benton County Food Share and Oregon Food Bank System. Every week, several large pallets of canned food, dry goods, fresh produce and frozen meats and vegetables are delivered by Linn Benton Food Share to the warehouse and then moved by Grace members and other volunteers to display shelves, back stock shelves, refrigerators and freezers. It is fun to share good conversations with other Grace members and to meet some nice people from outside of Grace.

While some of the items require lifting and moving heavy boxes (up to 50 pounds) onto rolling carts, other activities such as putting eggs, butter, and cheese into the refrigerator are less strenuous. There are always people to assist if something is too heavy for one person.

A few Grace members are trained to assist clients on the “shopping days.” On four days each week (Mon and Wed 1-3, Thurs 5-7, and Sat 10-12), local residents come to pick up food (“shop”) for their family, free of charge. Participants must meet low-income requirements and include the elderly, infirmed, homeless, single parents and the working poor. As an example, in October of this year 769 households were served including 1,679 adults and 733 children. There were 992 food bank visits and 19 home deliveries. Unfortunately, as demand surges, food delivery from Linn Benton Food Share and federal support are falling. In particular, dairy products are in limited supply.

We are thankful for our many blessings and for this opportunity to serve in the name of Christ.

Wayne Kradjan

Volunteer Interfaith Caregivers (VIC)

Since 1986 Volunteer Interfaith Caregivers of Corvallis has been on a mission to offer vital services to individuals with disabilities and older adults in Benton County. **VIC** is there to lend a hand with rides, grocery shopping, laundry, friendly visits and ramp building. VIC's core values are based on the Golden Rule: Treat others as you wish to be treated. Many of our clients have no family in the area and rely on the help of VIC to be able to stay in their own homes.

Here at Grace we have been blessed with a team of dedicated long time volunteers for VIC. Donna Wernz was the Grace representative on the board for 20 plus years, she resigned in 2024! Norma Moody was the Grace Coordinator for 23 years and resigned this past summer. Jim Wernz, Juan Guzman and Ardis Koester are present long time volunteers. Cathy Mueller has been a volunteer for several years and has now stepped into the Grace Coordinator position and in September became the board member representing Grace. Our congregation makes an annual contribution of \$200 to VIC in addition to the services of our volunteers. The services are provided free of charge, we do ask for help with the cost of materials for some projects.

VIC is always looking for friendly volunteers, especially office staff and drivers. Can you spare 3-4 hours a month to make a difference? If this is something you are interested in, you can go to <https://viccorvallis.org/> to apply or call the office at 541-714-0820.

The **BIG** news! At the Benton Community Foundation 7th Annual Philanthropic Achievement Award Banquet on November 13th **VIC** was honored as **Volunteer Group of the Year**! This is quite an honor and acknowledgement of the work VIC does!

Cathy Mueller
Grace Lutheran Coordinator and VIC board member

Refugee Support Report

Grace Lutheran Church has a long history of offering assistance to newly arrived refugees. This year, two features of this support were phased out.

For the better part of the last decade, we were the fiscal agent providing book keeping services for Welcoming Immigrants to Oregon (WITO). As that organization's activities were taken over by the newly formed Corvallis for Refugees group, our services as the WITO fiscal agent have ended.

Grace made available one of its rental houses as a temporary "landing pad" for newly arrived families hosted by Corvallis for Refugees. In this role, families from Afghanistan, Namibia, and several Latin American countries had shelter until more permanent housing was acquired for them. This arrangement ended about the same time the U.S. President terminated new refugee arrivals and associated financial support.

Grace members continued to support refugee families by attending the annual fund raising THRIVE EVENT sponsored by Corvallis for Refugees. This organization aims to support our new neighbors for up to five years after arrival as families navigate the complexities of schools, medical care, housing, language and employment in this strange new land. Volunteer opportunities abound for interested Grace members.

--

Gordon Matzke

TREASURER'S REPORT
For Church Council

Wednesday, January 7, 2026

General Operating Fund	December		2025 Year To Date		
	Budget	Actual	Budget	Actual	YTD % of Budget
Income					
Contributions	35,500	30,043	284,500	295,122	103.7%
Other Income	3,567	<u>3,740</u>	<u>42,860</u>	<u>29,292</u>	68.3%
Total Income	39,067	33,784	327,360	324,414	99.1%
Expenses					
Operating Expenses	25,950	25,386	311,449	314,640	101.0%
Gifts to the World	<u>3,550</u>	<u>3,004</u>	<u>28,450</u>	<u>29,512</u>	103.7%
Total Expenses	29,500	28,390	339,899	344,151	101.3%
Net Income (Deficit)		5,394		(19,738)	
Beginning Balance	<i>December 1</i>	(12,300)	<i>January 1</i>	12,831	
Ending Balance	<i>December 31</i>	(6,906)		(6,907)	

December Highlights

Income was below budget. Expenses were slightly below budget.

December 2025 RESTRICTED FUND BALANCES

General Fund Balance	(6,906.57)
Garfield School Fund	134.41
World Relief Kit Fund	0.00
Sack Lunches Balance	533.63
Quilters Fund	24.85
Prayer Shawl Fund	2.31
Altar Guild Fund	2,747.98
Music Fund	1,320.23
Library Fund	191.68
Communications Committee	415.43
Camp Lutherwood Scholarship Fund	351.25
Health Ministry	2,633.81
Hospitality	2,511.27
Outreach Projects	19.33
Men's Ministry	783.80
Partners in Faith	91.72
Small Group Books Fund	8.01
VBS/Day Camp Fund	99.50
Women's Ministry Fund	330.00
Onsite/Local Youth Prog Fund	5,560.66
Youth Travel Fund	3,516.99
Major Maintenance Projects	30.00
PA System	1,121.66
Property Fund	106.53
GIF Initiative Fund	1,891.17
Rentals Fund	(3,821.61)
Thrivent Discretionary Fund	33.00
Thrivent Choice Fund	0.00
Church Security Fund	199.88
Office Salary Support Balance	157.02
Staff Gifts	(0.11)
Grace Found. Employee Fund	1,408.58
Bell Tower Fund	6,838.89
Courtyard Mem Pavers Fund	475.53
Emergency Assistance Fund	50.00
The Living Lutheran Fund	235.00
Total General & Restricted Funds	<u>\$ 23,095.83</u>

Grace Lutheran Church
Fund Balances
2025

	Jan.	Feb.	Mar.	Apr.	May	June	July	Aug.	Sept.	Oct.	Nov.	Dec.	Total
Beginning General Fund balance	12,831.00	27,166.99	21,462.61	11,976.67	11,588.07	15,243.33	4,010.70	9,348.75	(2,550.36)	(11,044.81)	(19,224.48)	(12,300.48)	12,831.00
Income													
41.001 Contributions - General Fund	41,981.96	22,304.26	16,259.86	28,599.78	28,135.46	13,144.76	30,213.44	15,444.89	15,409.26	19,167.32	32,863.21	29,556.47	292,829.69
41.002 Contributions - Plate	150.00	516.00	237.75	241.00	96.56	106.52	121.00	81.35	20.00	163.00	70.00	467.00	2,292.18
41.003 Contributions - GLC Frd for hymnals	0.00	0.00	0.00	0.00	0.00	0.00	0.00	0.00	0.00	0.00	0.00	0.00	0.00
41.004 Contributions-Bread for the World	0.00	0.00	0.00	0.00	0.00	0.00	0.00	0.00	0.00	0.00	0.00	0.00	0.00
Total Contributions	42,111.96	22,822.26	16,498.61	28,810.78	28,232.02	13,251.28	30,334.44	15,526.24	15,429.26	19,330.32	32,733.21	30,043.47	295,121.87
Facility Use - Sandcastle	0.00	880.00	880.00	880.00	0.00	0.00	0.00	0.00	880.00	880.00	880.00	1,388.89	6,648.89
41.022 Facility Use - Sandcastle	0.00	0.00	0.00	0.00	0.00	0.00	0.00	0.00	0.00	0.00	0.00	0.00	0.00
41.027 Music Ministry Rentals	230.00	535.00	230.00	439.43	574.00	198.15	0.00	400.00	599.32	0.00	50.00	885.00	2,086.58
41.029 Facility Use - Misc.	0.00	0.00	0.00	0.00	25.00	0.00	0.00	0.00	0.00	0.00	0.00	250.00	2,319.32
Total Facility Use	230.00	1,415.00	1,110.00	1,319.43	599.00	198.15	0.00	400.00	1,479.32	880.00	930.00	2,503.89	11,064.79
Interest - Checking	3.60	3.83	2.95	2.89	3.03	2.51	2.60	2.15	1.37	1.07	0.87	1.29	28.16
41.040 Interest - Checking	3.60	3.83	2.95	2.89	3.03	2.51	2.60	2.15	1.37	1.07	0.87	1.29	28.16
Rental Property Income	1,500.00	1,500.00	1,500.00	1,500.00	1,500.00	1,500.00	1,500.00	1,500.00	1,500.00	1,500.00	1,500.00	1,500.00	15,000.00
41.032 Rental Property Income	1,500.00	1,500.00	1,500.00	1,500.00	1,500.00	1,500.00	1,500.00	1,500.00	1,500.00	1,500.00	1,500.00	1,500.00	15,000.00
Luther Hs Reimb Employee costs	0.00	0.00	0.00	0.00	0.00	0.00	0.00	0.00	0.00	0.00	0.00	0.00	0.00
41.050 Luther Hs Reimb Employee costs	0.00	0.00	0.00	0.00	0.00	0.00	0.00	0.00	0.00	0.00	0.00	0.00	0.00
Foundation Grant Income	0.00	160.00	120.00	575.60	0.00	338.60	0.00	132.00	0.00	86.00	571.42	1,235.18	3,196.80
41.060 Foundation Grant Income	0.00	160.00	120.00	575.60	0.00	338.60	0.00	132.00	0.00	86.00	571.42	1,235.18	3,196.80
Total Other Income	1,503.60	1,663.83	1,622.95	2,078.49	1,503.03	1,841.11	1,502.60	1,634.15	1,501.37	1,567.07	572.29	1,236.47	18,226.96
41.060 Foundation Grant Income	1,503.60	1,663.83	1,622.95	2,078.49	1,503.03	1,841.11	1,502.60	1,634.15	1,501.37	1,567.07	572.29	1,236.47	18,226.96
Total GF Income	43,845.58	25,901.09	19,229.56	32,208.70	30,334.05	15,290.54	31,837.04	17,560.38	18,409.95	21,777.39	34,235.50	33,793.83	324,413.62
43.845.58 Total GF Income	43,845.58	25,901.09	19,229.56	32,208.70	30,334.05	15,290.54	31,837.04	17,560.38	18,409.95	21,777.39	34,235.50	33,793.83	324,413.62
Expense													
51.150 Pastor - Salary	2,383.25	2,556.25	2,469.75	2,469.75	2,469.75	2,469.75	2,469.75	2,469.75	2,469.75	2,469.75	2,469.75	2,469.75	2,469.75
51.151 Pastor - Housing	2,500.00	2,500.00	2,500.00	2,500.00	2,500.00	2,500.00	2,500.00	2,500.00	2,500.00	2,500.00	2,500.00	2,500.00	2,500.00
51.152 Pastor - SS Allowance	373.57	373.57	373.57	373.57	373.57	373.57	373.57	373.57	373.57	373.57	373.57	373.57	373.57
51.155 Pastor - Pension/Benefits	1,387.80	1,282.66	1,282.66	1,468.85	1,305.60	1,305.60	1,305.60	1,305.60	1,305.60	1,305.60	1,305.60	1,305.60	1,305.60
51.156 Pastor - Continuing Ed.	0.00	0.00	0.00	0.00	0.00	0.00	0.00	0.00	0.00	0.00	0.00	0.00	0.00
51.160 Pastor - Prof. Expenses	0.00	94.97	380.00	(350.00)	69.77	0.00	99.89	0.00	404.00	577.22	0.00	172.78	172.78
51.180 Child Care Provider-Pay	240.00	280.00	440.00	0.00	280.00	240.00	420.00	320.00	280.00	440.00	280.00	440.00	440.00
51.111 Health Ministry-Expense	0.00	0.00	0.00	0.00	0.00	0.00	0.00	0.00	0.00	0.00	0.00	0.00	0.00
51.009 Call Expenses	0.00	0.00	0.00	0.00	0.00	0.00	0.00	0.00	0.00	0.00	0.00	0.00	0.00
51.170 Pulpit Supply	0.00	225.00	0.00	0.00	225.00	400.00	0.00	0.00	225.29	0.00	0.00	0.00	0.00
Pastoral & Caring Ministry	6,884.62	7,312.45	7,425.98	6,902.17	7,223.69	7,288.92	7,188.61	6,988.92	7,558.21	7,864.62	6,928.92	7,384.79	86,911.90
51.240 Dir. of Music & Worship - Salary	3,549.08	3,762.08	3,655.58	3,655.58	3,655.58	3,655.58	3,655.58	3,655.58	3,655.58	3,655.58	3,655.58	3,655.58	3,655.58
51.241 Dir. of Music & Worship/Benefits	0.00	0.00	0.00	0.00	0.00	0.00	0.00	0.00	0.00	0.00	0.00	0.00	0.00
51.242 Dir. of Music - Continuing Educ	0.00	0.00	0.00	0.00	0.00	0.00	0.00	0.00	0.00	0.00	0.00	0.00	0.00
51.250 Organist - Salary	0.00	0.00	0.00	0.00	0.00	0.00	0.00	0.00	0.00	0.00	0.00	0.00	0.00
51.251 Organist - Salary Continue Ed	0.00	0.00	0.00	0.00	0.00	0.00	0.00	0.00	0.00	0.00	0.00	0.00	0.00
51.210 Altar Guild	34.00	0.00	0.00	0.00	57.57	27.00	549.00	0.00	397.00	148.38	0.00	54.00	54.00
51.220 Worship Supplies	0.00	0.00	0.00	0.00	335.88	27.00	0.00	0.00	0.00	0.00	0.00	0.00	0.00
51.230 Music Interns	320.00	240.00	920.00	0.00	380.00	160.00	400.00	200.00	150.00	200.00	200.00	480.00	480.00
51.260 Music Interns	0.00	0.00	0.00	0.00	0.00	0.00	0.00	0.00	0.00	0.00	0.00	0.00	0.00
51.435 Organ/Piano Maintenance	571.42	571.42	571.42	571.42	571.42	571.42	571.42	571.42	571.42	571.42	571.42	571.42	571.42
51.255 Special Musicians	0.00	0.00	0.00	0.00	548.00	0.00	0.00	0.00	0.00	0.00	0.00	0.00	0.00
51.235 Reprint Licenses	0.00	0.00	0.00	0.00	0.00	0.00	0.00	0.00	0.00	0.00	0.00	0.00	0.00
Worship & Music Ministry	4,474.50	4,573.50	5,337.16	5,874.92	5,548.45	4,414.00	5,176.00	4,427.00	4,684.00	4,573.38	4,427.00	4,824.51	58,434.42
51.360 Dir. of Disc. Min. - Salary	0.00	0.00	0.00	0.00	0.00	0.00	0.00	0.00	0.00	0.00	0.00	0.00	0.00
51.361 DDM - Pension/Benefits	0.00	0.00	0.00	0.00	0.00	0.00	0.00	0.00	0.00	0.00	0.00	0.00	0.00
51.363 DDM - Continuing Ed	0.00	0.00	0.00	0.00	0.00	0.00	0.00	0.00	0.00	0.00	0.00	0.00	0.00
51.364 DDM - Prof. Conferences	0.00	0.00	0.00	0.00	0.00	0.00	0.00	0.00	0.00	0.00	0.00	0.00	0.00
51.368 DDM - Children, Youth & Fam Ministry	3,587.75	3,801.91	3,694.33	3,694.33	3,694.33	3,694.33	3,694.33	3,694.33	3,694.33	3,694.33	3,694.33	3,694.33	3,694.33
51.371 Youth Min. Director-Expense	0.00	0.00	0.00	0.00	0.00	0.00	0.00	0.00	0.00	0.00	0.00	0.00	0.00
51.362 DDM - Expense	0.00	0.00	0.00	0.00	0.00	0.00	0.00	0.00	0.00	0.00	0.00	0.00	0.00
51.357 Library Support	0.00	0.00	72.00	25.00	0.00	72.00	0.00	0.00	0.00	62.94	0.00	0.00	0.00
51.310 CE Curriculum	39.99	0.00	0.00	0.00	0.00	0.00	0.00	0.00	0.00	0.00	0.00	0.00	0.00

on 12/30/2024 December 2025 Treasurer's Report.xlsx

Grace Lutheran Church
Fund Balances
2025

	Jan.	Feb.	Mar.	Apr.	May	June	July	Aug.	Sept.	Oct.	Nov.	Dec.	Total
51.320 CE Confirmation	0.00	0.00	0.00	0.00	0.00	0.00	0.00	0.00	0.00	0.00	0.00	0.00	0.00
51.330 CE High School Curriculum	0.00	0.00	0.00	0.00	0.00	0.00	0.00	0.00	0.00	0.00	0.00	0.00	0.00
51.340 CE Adult Education	0.00	0.00	0.00	0.00	0.00	0.00	0.00	0.00	0.00	0.00	0.00	0.00	0.00
51.350 CE Supplies & Bibles	0.00	192.00	0.00	0.00	42.00	150.00	0.00	192.00	0.00	0.00	192.00	0.00	0.00
51.355 CE Devotional Booklets	0.00	0.00	0.00	0.00	0.00	0.00	0.00	0.00	0.00	0.00	0.00	0.00	0.00
51.380 The Lutheran	0.00	0.00	0.00	0.00	0.00	0.00	0.00	0.00	0.00	0.00	0.00	0.00	0.00
51.385 Communications Committee Expense	0.00	167.23	0.00	0.00	0.00	0.00	0.00	0.00	130.00	0.00	0.00	0.00	0.00
Discipling Ministry	3,626.74	4,161.14	3,766.33	3,719.33	3,736.33	3,916.33	3,694.33	3,886.33	3,824.33	3,757.27	3,886.33	3,694.33	45,669.12
51.450 Custodian - Pay	558.00	558.00	558.00	558.00	558.00	558.00	558.00	558.00	558.00	558.00	558.00	558.00	558.00
51.400 Mortgage - Church Property	0.00	0.00	0.00	0.00	0.00	0.00	0.00	0.00	0.00	0.00	0.00	0.00	0.00
51.410 Telephone & Cable	181.05	182.65	182.89	182.89	0.00	228.38	113.16	153.61	153.61	154.15	154.15	154.15	154.15
51.411 Natural Gas	948.62	1,166.12	666.07	468.52	236.79	122.33	46.56	32.70	31.09	135.61	475.33	943.31	943.31
51.412 Electricity	427.90	405.93	366.55	401.66	349.54	306.95	0.00	857.56	338.32	266.56	349.80	441.02	441.02
51.413 Trash Disposal	267.94	282.25	282.25	282.25	282.25	282.25	282.25	282.25	282.25	282.25	282.25	282.25	282.25
51.414 Water	627.24	706.31	700.88	711.74	728.03	628.09	0.00	2,166.74	1,212.94	1,096.09	831.32	783.59	783.59
51.420 Operating Supplies	425.66	0.00	28.44	93.41	0.00	354.38	0.00	190.27	249.27	216.86	0.00	0.00	0.00
51.430 Maintenance & Repair	0.00	0.00	295.00	1,353.81	65.00	0.00	0.00	256.92	180.00	62.90	201.45	0.00	0.00
51.440 Copier Maintenance & Lease	256.92	256.92	260.20	253.92	256.92	256.92	256.92	256.92	256.92	256.92	256.92	256.92	256.92
51.460 Insurance	0.00	2,415.50	0.00	2,415.50	0.00	0.00	0.00	2,415.50	0.00	2,415.50	0.00	0.00	0.00
Operations Ministry-Facilities	3,693.33	5,973.68	3,345.28	6,744.50	2,478.53	2,934.18	1,296.89	6,913.55	3,262.10	5,476.83	3,109.22	3,419.24	48,607.33
51.620 Admin. Asst. - Salary	2,702.00	2,913.00	2,807.50	2,807.50	2,807.50	2,807.50	2,807.50	2,807.50	2,807.50	2,807.50	2,807.50	2,807.50	2,807.50
51.621 Admin. Asst. - Pension/Benefits	179.14	2,311.14	1,245.14	1,256.70	1,248.49	1,248.49	1,248.49	1,248.49	1,248.49	1,248.49	1,248.49	1,248.49	1,248.49
51.622 Admin. Asst. - Continuing Educ	0.00	0.00	0.00	0.00	0.00	0.00	0.00	0.00	0.00	0.00	0.00	0.00	0.00
51.625 Church Bookkeeper - Pay	951.50	866.41	661.82	661.82	536.16	544.54	477.52	625.00	625.00	625.00	625.00	625.00	625.00
51.626 Church Bookkeeper - Continue Ed	0.00	0.00	0.00	0.00	0.00	0.00	0.00	0.00	0.00	0.00	0.00	0.00	0.00
51.630 Employer Taxes & SAIF	1,525.96	974.00	995.07	1,204.40	939.13	893.04	1,423.80	964.14	901.49	1,477.73	996.29	961.92	961.92
51.655 Conferences/Conventions	0.00	0.00	700.00	350.00	(932.27)	364.24	0.00	0.00	0.00	0.00	0.00	0.00	0.00
51.610 Office Expense	362.50	125.53	31.00	0.00	227.23	804.57	0.00	0.00	387.77	131.22	0.00	151.56	151.56
51.611 Postage	312.20	0.00	269.06	0.00	0.00	133.60	0.00	0.00	0.00	0.00	0.00	198.80	198.80
51.615 Advertising	26.40	33.00	59.40	92.69	10.00	19.79	176.40	33.00	26.40	26.40	33.00	26.40	26.40
51.660 Stewardship	114.00	0.00	0.00	0.00	0.00	0.00	0.00	0.00	0.00	0.00	0.00	0.00	0.00
51.670 Council Expense	0.00	0.00	0.00	0.00	0.00	0.00	0.00	0.00	0.00	0.00	0.00	0.00	0.00
51.671 Council Retreat Expenses	423.00	0.00	352.24	0.00	0.00	(211.00)	0.00	0.00	0.00	0.00	0.00	0.00	0.00
51.699 Misc. & Contingency	32.70	69.62	39.52	31.27	33.55	39.97	35.01	33.95	36.18	35.59	36.41	43.05	43.05
Operations Ministry	6,529.40	7,292.70	7,160.75	6,404.38	4,869.79	6,644.74	6,168.72	5,712.08	6,032.83	6,351.93	5,686.69	6,062.72	75,016.73
Total Expenses w/o Gifts	25,308.59	29,313.47	27,035.50	29,745.30	23,856.79	25,186.17	23,464.55	27,807.86	25,361.47	28,024.03	24,038.16	25,385.59	314,639.50
51.910 ELCA/Synod Benevolence	3,168.00	1,539.00	937.00	2,106.00	2,080.00	582.00	2,290.44	809.62	799.93	1,190.03	2,530.32	2,261.35	2,261.35
51.930 Pastoral Counseling Center	0.00	0.00	0.00	0.00	0.00	0.00	0.00	0.00	0.00	0.00	0.00	0.00	0.00
51.940 Luther House	587.00	587.00	587.00	587.00	587.00	587.00	587.00	587.00	587.00	587.00	587.00	587.00	587.00
51.950 Camp Lutheran	99.00	99.00	99.00	99.00	99.00	99.00	99.00	99.00	99.00	99.00	99.00	99.00	99.00
51.960 Interfaith Caregivers	200.00	0.00	0.00	0.00	0.00	0.00	0.00	0.00	0.00	0.00	0.00	0.00	0.00
51.961 Bread for the World	57.00	57.00	57.00	57.00	57.00	57.00	57.00	57.00	57.00	57.00	57.00	57.00	57.00
51.982 Lutheran Peace Fellowship	100.00	0.00	0.00	0.00	0.00	0.00	0.00	0.00	0.00	0.00	0.00	0.00	0.00
Outreach Ministry (Gifts to the World)	4,211.00	2,282.00	1,880.00	2,851.00	2,823.00	1,325.00	3,033.44	1,552.62	1,542.93	1,933.03	3,273.32	3,004.35	29,511.69
Total GF Expense	29,519.59	31,595.47	28,715.50	32,596.30	26,679.79	26,523.17	26,497.99	29,460.50	26,904.40	29,957.06	27,311.48	28,389.94	344,151.19
Net Income (Deficit)	14,325.99	(5,894.38)	(9,485.94)	(387.50)	3,654.26	(11,232.63)	5,339.05	(11,900.11)	(8,494.45)	(8,179.67)	6,924.02	5,353.89	(19,737.57)
Ending GF Balance	27,156.99	21,462.61	11,976.67	11,589.07	15,243.33	4,010.70	9,349.75	(2,550.36)	(11,044.81)	(19,224.48)	(12,300.46)	(6,906.57)	(6,906.57)
Total Restricted Fund Balances	0.00	0.00	0.00	0.00	0.00	0.00	0.00	0.00	0.00	0.00	0.00	0.00	0.00
Total for All Funds	27,156.99	21,462.61	11,976.67	11,589.07	15,243.33	4,010.70	9,349.75	(2,550.36)	(11,044.81)	(19,224.48)	(12,300.46)	(6,906.57)	(6,906.57)

01/02/2026 December 2025 Treasurer's Report.xlsx

Narrative for the 2026 Budget Proposal

2026 is going to be an exciting year for Grace Lutheran Church. We will unfortunately be losing Shae in February but will be adding a seminarian intern for a year starting in the June/July timeframe.

An intern is both a ministry and a “payback” proposition. Seminarians get to gain congregation experience under the tutelage of both our pastor, Pastor Remy, and the watchful eyes of those at the seminary. On some kind of a continuum, different in every circumstance, the first part of the internship will be high on the training side of the curve and the last part of the internship will be high on the doing and assisting side of the curve. This is truly a ministry we provide for the success of the intern and the life of the larger church. We have already procured fifty (50) percent funding from the Grace Foundation for this ministry and there are several people within the congregation that have indicated a willingness to help financially support this ministry directly, above and beyond their regular giving.

It is anticipated that between Pastor Remy and the intern, we will maintain the same level of staff support to youth and young adult ministry as we have with Shae’s presence.

The Council supports this budget and asks the congregation to approve.

2025 was a good year but lower income than expected in two (2) categories (Sandcastle Rent and Rental Property income), by themselves resulting in \$6,931 less than expected income. The shortfall from Sandcastle resulted as the consequence of automated system errors under the new lease agreement. The shortfall will be made up in 2026, a bonus in income this year! The rental property shortfall was due to a number of factors around the rental of the Kings House after the lease agreement with Corvallis For Refugees and also the agreement with the renters stranded there after government cutbacks. A significant number of repairs were required and, subsequently, due to all the issues, prime rental time was missed, and the house has not yet been rented as of this writing. This, too, is anticipated to be corrected in January.

Our fall stewardship campaign had very good results this year, having an Estimate of Giving total from those cards returned up about \$10,000 over last year’s results.

This budget would still not be possible without support from Grace Foundation. The Foundation has agreed to pay fifty (50) percent of the monthly cost of the intern for the year they are on site. Furthermore, there are funds within the Foundation that are expressly designed to offset certain music costs such as piano and organ tuning/maintenance, music and reprint licenses. In addition, the shortfall from Sandcastle last year due to administrative errors will be corrected this year, raising the 2026 expected income from their lease.

Staff salaries are per the Personnel Committee recommendations with other modifications made due to insurance coverage and a corrective reading of the Synod Compensation Guidelines for Ordained Staff.

Please carefully look at the footnotes at the bottom of the proposed budget for more explanation. The total proposed income budget this year is \$372,521 including income from the Foundation and the increased one-time rent from Sandcastle. This is an increase of about \$48,000. The operating budget is \$364,838.

The anticipated "Donations" income is a stretch number this year. It is reasonable but still a stretch. Not included in anticipated income are several members indicating their willingness above and beyond to give support dollars for the planned intern.

Grace Lutheran Church, Corvallis - 2026 Proposed Budget

Expense/Income Category Description		2025		2026	2026		See footnotes below
		2025 Budget	2025 Actual	Base Budget	2026 Budget Increase/Decrease Over 2025	2026 Actual Increase/Decrease Over 2025	
SUMMARY:	Beginning Balance	\$12,832	\$12,832	-\$6,905			
	Revenues	\$327,346	\$324,414	\$372,521	13.8%	14.8%	
	Expenses	\$340,148	\$344,151	\$364,838	7.3%	6.0%	
	Net Revenue	-\$12,802	-\$19,737	\$7,683			
	Ending Balance	\$30	-\$6,905	\$778			
EXPENSE:							
Pastoral and Caring Ministry							
	Ministry Staffing						
51.150	Pastors-Salaries	\$29,637	\$29,637	\$39,596	33.6%	33.6%	1
51.151	Pastors-Housing	\$30,000	\$30,000	\$30,000	0.0%	0.0%	2
51.152	Pastors-SS Allowance	\$4,573	\$4,483	\$5,765	26.1%	28.6%	
51.155	Pastors-Pension/Benefits	\$15,000	\$15,867	\$17,064	13.8%	7.5%	
51.156	Pastors-Continuing Ed.	\$750	\$750	\$750	0.0%	0.0%	
51.161	Pastors-Prof. Expenses	\$1,000	\$1,000	\$1,000	0.0%	0.0%	
Staffing Subtotal		\$80,960	\$81,737	\$94,175	16.3%	15.2%	
	Ministry Support						
	Call Expenses	\$0	\$0	\$0			
51.111	Caring Ministry Expenses	\$100	\$0	\$0	-100.0%	-----	3
51.170	Pulpit Supply	\$1,000	\$1,075	\$700	-30.0%	-34.9%	
Support Subtotal		\$1,100	\$1,075	\$700	-36.4%	-34.9%	
Pastoral and Caring Ministry Total		\$82,060	\$82,812	\$94,875	15.6%	14.6%	
Worship & Music Ministry							
	Ministry Staffing						
51.240	Dir. of Music	\$43,867	\$43,867	\$42,746	-2.6%	-2.6%	4
51.241	Dir Music-Pension/Benefits		\$63	\$2,363	-----	3650.8%	5
51.242	Dir. Of Music-Continuing Educ.	\$0	\$0	\$0	-----	-----	
51.260	Interns	\$4,000	\$4,090	\$4,000	0.0%	-2.2%	
51.250	Organist-Sub for Music Dir	\$0	\$0	\$800	-----	-----	6
Staffing Subtotal		\$47,867	\$48,020	\$49,909	4.3%	3.9%	
	Ministry Support						
51.210	Altar Guild	\$600	\$475	\$672	12.0%	41.5%	
51.220	Worsip Supplies	\$1,000	\$1,341	\$1,000	0.0%	-25.4%	
51.230	Music Expenses	\$0	\$0	\$200	-----	-----	7
51.435	Organ/Plano Maintenance	\$800	\$550	\$800	0.0%	45.5%	8
51.255	Special Musicians	\$5,000	\$6,857	\$8,252	65.0%	20.3%	
51.235	Reprint Licenses	\$1,200	\$1,191	\$1,000	-16.7%	-16.0%	9
Support Subtotal		\$8,600	\$10,414	\$11,924	38.7%	14.5%	
Worship & Music Ministry Total		\$56,467	\$58,434	\$61,833	9.5%	5.8%	
Discipling Ministry							
	Ministry Staffing						
51.368	Youth Ministries Dir.	\$44,332	\$44,332	\$7,390	-83.3%	-83.3%	
51.369	Youth Min/Pension /Benefits	\$0	\$0	\$0	-----	-----	
51.363	Continuing Ed.	\$0	\$0	\$0	-----	-----	
51.364	Mission Enhancement/Training/Intern	\$0	\$0	\$26,000	-----	-----	10
51.130	Child Care Provider-Pay	\$5,000	\$4,100	\$5,000	0.0%	22.0%	
Staffing Subtotal		\$49,332	\$48,432	\$38,390	-22.2%	-20.7%	
	Ministry Support						
51.362	Staff-Expense	\$250	\$0	\$250	0.0%	-----	
51.310	CE Curriculum	\$200	\$40	\$200	0.0%	400.0%	
15.320	CE Confirmation	\$100	\$0	\$100	0.0%	-----	
51.330	CE High School Curriculum	\$200	\$0	\$200	0.0%	-----	
51.340	CE Adult Education	\$200	\$0	\$200	0.0%	-----	
51.350	CE Supplies & Bibles	\$150	\$0	\$150	0.0%	-----	
51.355	CE Devotional Booklets	\$500	\$768	\$800	60.0%	4.2%	
51.357	Library Support	\$275	\$232	\$175	-36.4%	-24.6%	
Support Subtotal		\$1,875	\$1,040	\$2,075	10.7%	99.5%	
Discipling Ministry Total		\$51,207	\$49,472	\$40,465	-21.0%	-18.2%	
Operations Ministry - Facilities							
	Ministry Staffing						
51.450	Custodian-Pay	\$6,700	\$6,696	\$7,500	11.9%	12.0%	
Staffing Subtotal		\$6,700	\$6,696	\$7,500	11.9%	12.0%	
	Ministry Support						

Grace Lutheran Church, Corvallis - 2026 Proposed Budget

Expense/Income Category Description	2025		2026	2026		See footnotes below
	2025 Budget	2025 Actual	Base Budget	2026 Budget Increase/Decrease Over 2025	2026 Actual Increase/Decrease Over 2025	
51.410 Telephone & Cable	\$2,200	\$1,840	\$2,300	4.5%	25.0%	
51.411 Natural Gas	\$5,000	\$5,297	\$5,500	10.0%	3.8%	
51.412 Electric Power	\$4,500	\$4,546	\$4,800	6.7%	5.6%	
51.413 Trash Disposal	\$3,300	\$3,373	\$3,300	0.0%	-2.2%	
51.414 Water	\$8,500	\$10,391	\$10,500	23.5%	1.0%	
51.420 Operating Supplies	\$1,500	\$1,558	\$1,600	6.7%	2.7%	
51.430 Maintenance & Repair	\$8,500	\$2,158	\$8,500	0.0%	293.9%	
51.440 Copier Maintenance & Lease	\$3,000	\$3,086	\$3,200	6.7%	3.7%	
51.460 Insurance	\$6,600	\$9,662	\$10,000	51.5%	3.5%	
Support Subtotal	\$43,100	\$41,911	\$49,700	15.3%	18.6%	
Operations Ministry - Facilities Total	\$49,800	\$48,607	\$57,200	14.9%	17.7%	
Operations Ministry						
Ministry Staffing						
51.620 Admin. Assts.-Salaries	\$33,690	\$33,690	\$34,499	2.4%	2.4%	11
51.621 Admin. Asst.-Pension/Benefits	\$9,380	\$14,980	\$13,804	47.2%	-7.9%	
51.625 Church Bookkeeper	\$9,000	\$7,825	\$7,322	-18.6%	-6.4%	
51.626 Church Bookkeeper-Continuing Ed.	\$0	\$0	\$0	---	---	
51.630 Employer Payroll Taxes & SAIF	\$13,080	\$13,197	\$15,000	14.7%	13.7%	
Staffing Subtotal	\$65,150	\$69,692	\$70,625	8.4%	1.3%	
Ministry Support						
51.655 Conferences/Staff Dev.	\$200	\$482	\$200	0.0%	-58.5%	12
Synod Assembly	\$0	\$0	\$625	---	---	
51.610 Office Expense	\$3,000	\$2,221	\$3,000	0.0%	35.1%	13
51.611 Postage	\$1,000	\$914	\$1,500	50.0%	64.1%	
51.615 Advertising	\$1,100	\$563	\$500	-54.5%	-11.2%	14
51.385 Communications Comm	\$500	\$297	\$500	0.0%	68.4%	
51.670 Stewardship	\$0	\$114	\$0	---	-100.0%	
51.671 Council Expense	\$750	\$564	\$750	0.0%	33.0%	
51.675 Pastoral Call Expenses	\$0	\$0	\$0	---	---	
51.380 The Lutheran	\$0	\$0	\$0	---	---	
51.699 Misc. & Contingency	\$465	\$467	\$465	0.0%	-0.4%	
Support Subtotal	\$7,015	\$5,622	\$7,540	7.5%	34.1%	
Operations Ministry Total	\$72,165	\$75,314	\$78,165	8.3%	3.8%	
Total Expenses w/o Gifts						
Gifts	\$311,699	\$314,639	\$332,538	6.7%	5.7%	
51.910 ELCA/Synod Benevolence	\$19,233	\$20,296	\$23,084	20.0%	13.7%	
51.940 Lutheran Campus Ministry	\$7,044	\$7,044	\$7,044	0.0%	0.0%	
51.950 Camp Lutherwood	\$1,188	\$1,188	\$1,188	0.0%	0.0%	
51.960 Interfaith Caregivers	\$200	\$200	\$200	0.0%	0.0%	
51.962 Lutheran Peace Fellowship	\$100	\$100	\$100	0.0%	0.0%	
51.961 Bread for the World	\$684	\$684	\$684	0.0%	0.0%	
Total Gifts to the World	\$28,449	\$29,512	\$32,300	13.5%	9.4%	
TOTAL EXPENSES	\$340,148	\$344,151	\$364,838	7.3%	6.0%	
INCOME:						
41.00x Contributions	\$284,486	\$295,121	\$323,000	13.5%	9.4%	15
41.022 Sandcastle Rent	\$10,560	\$6,649	\$14,471	37.0%	117.6%	
41.027 Music Min Income	\$6,250	\$2,097	\$3,000	-52.0%	43.1%	
41.029 Facility Rentals	\$3,000	\$2,319	\$3,000	0.0%	29.4%	
41.040 Checking Account Interest	\$50	\$28	\$50	0.0%	78.6%	
41.050 Luther House Empl Reimb	\$0	\$0	\$0	---	---	
41.060 Foundation Grant	\$5,000	\$3,199	\$17,000	240.0%	431.4%	
41.032 Rental Property Income	\$18,000	\$15,000	\$12,000	-33.3%	-20.0%	
TOTAL INCOME	\$327,346	\$324,413	\$372,521	13.8%	14.8%	
NET INCOME (DEFICIT)	-\$12,802	-\$19,738	\$7,683			
Beginning Balance	\$12,832	\$12,832	-\$6,905			
Ending Balance	\$30	-\$6,906	\$778			
Total Staffing Costs						
	\$250,009	\$254,577	\$260,599	4.2%	2.4%	
Total Support Other than Facilities						
	\$18,590	\$18,151	\$22,239	19.6%	22.5%	
Total Facilities Support						
	\$43,100	\$41,911	\$49,700	15.3%	18.6%	
Total Outreach						
	\$28,449	\$29,512	\$32,300	13.5%	9.4%	
Total						
	\$340,148	\$344,151	\$364,838	7.3%	6.0%	

Grace Lutheran Church, Corvallis - 2026 Proposed Budget

Expense/Income Category Description	2025		2026	2026		See footnotes below
	2025 Budget	2025 Actual	Base Budget	2026 Budget Increase/Decrease Over 2025	2026 Actual Increase/Decrease Over 2025	

NOTES:

- 1 Includes "direct reporting" times 3 - total \$1500
- 2 Combined 3 lines totaling \$75,361.13 - includes new formula for SS Allowance
- 3 Intern use brings this # down from 2025 estimate
- 4 Total Pkg 2025 = \$43,867; 2026 = \$45,109
- 5 New-- now getting retirement benefits
- 6 New line for 51.250 Organist sub for Music Dir
- 7 When purchased (new choir music), ask Foundation for reimbursement Kuehn fund.
- 8 Expecting Foundation funding
- 9 Kuehn fund at Foundation to pay reprint licenses.
- 10 6.5 months max for 2026; up to \$13,000 from Foundation to pay half; In addition, special donations expected from congregation
- 11 \$525 new deduction from Andrea's paycheck; husband's 1/2 premium
- 12 This represents 2 x \$125 = \$250; or 5 x \$125 = \$625
- 13 Outside reach Facebook & Gazette Times only
- 14 Inside church membership reach/website
- 15 Sandcastle rent--Includes #s to catch up with 2025 arrears rent (488.89 times 8 mos=3911.12)

Notes

ANNUAL CONGREGATIONAL MEETING OPENING LITURGY

Recognizing that our faith is a living, busy, active and mighty thing, may the grace of our Lord Jesus Christ and the communion of the Holy Spirit be with each of you.

And also with you.

Teach us to love you with all our heart, soul, mind and strength.

Receive our prayer, O God.

Descend on our hearts, that we may love others in the ways Jesus loves us.

Receive our prayer, O God.

Empower us to be enthusiastic in pursuing your vision for our congregation.

Receive our prayer, O God.

Move us to engage issues in our community in Christlike ways, and to pursue deep and authentic relationships with those with whom we serve and partner.

Receive our prayer, O God.

Strengthen us to face the barriers we encounter in doing your work, learning to work with others amid disagreement.

Receive our prayer, O God.

Give us the ability to adapt to the cultural, economic and social changes that occur in the neighborhoods we serve.

Receive our prayer, O God.

Guide us to be a healthy congregation that learns from its failures as well as its successes and offers wisdom to others.

Receive our prayer, O God.

As we strive to become the church that we proclaim to be, raise up leaders who focus on the gospel of freedom, forgiveness and reconciliation as given to us through God's indescribable act of love in the death and resurrection of Jesus Christ. Renew us daily in our baptism, that we may discover vitality in our relationships with you, each other and those we serve in the world.

Amen.

Founded on Faith



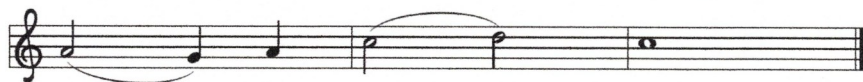
1 Found - ed on faith, the church— a - live by grace—
2 Your cross, O Christ, re - news our life each day.
3 E - quipped by prayer, we live the Spir - it's call.
4 Grow - ing in grace for God's cre - at - ed earth,
5 Found - ed on faith, called forth, em - pow'ed to serve,



pro - claims the gos - pel here and ev - 'ry place.
Bap - tized in you, we learn and teach and pray.
Em - pow'ed to serve with gifts, both great and small,
we yearn for jus - tice, peace, and hu - man worth;
we share God's end - less love with - out re - serve.



The word of God re - sounds through time and space:
Fed by your love, with thank - ful hearts, we say:
we bring the liv - ing hope of God to all.
a world re - stored; a faith - ful, car - ing church.
Then let us shout a - loud the liv - ing Word!



Al - le - lu - ia!

All Creation Sings, 1048

Text and music © 2017 Paul D. Weber, admin.

Augsburg Fortress. Reproduced by permission.

THROUGH YOUR GENEROSITY, GOD IS AT WORK ACROSS THE ELCA.

MISSION SUPPORT

A portion of your offering, called Mission Support, advances the ministry of our church, helping the ELCA nurture Christian community, raise up leaders, serve our neighbors and strive for justice.

ELCA WORLD HUNGER

Part of our church's long tradition of meeting human needs, ELCA World Hunger testifies to our hope for and commitment to God's promise of a time when we will hunger and thirst no more. ELCA World Hunger walks alongside communities in more than 60 countries — including the United States — to create unique solutions to hunger and poverty.

LUTHERAN DISASTER RESPONSE

Lutheran Disaster Response shares God's hope, healing and renewal with people whose lives have been disrupted by disasters in the United States and around the world. When the dust settles and the headlines change, we stay to provide ongoing assistance to those in need.

WHERE NEEDED MOST

Where Needed Most supports the powerful ways we work together around the world — supporting leaders, inspiring young people, fueling ministries and championing global mission. Gifts to Where Needed Most support and sustain the people, congregations, synods and ministries working around the world to realize the hope-filled future God promises.



Evangelical
Lutheran Church
in America

Sign up to hear more stories of impact from the ELCA churchwide organization at [ELCA.org/subscribe](https://elca.org/subscribe).

Read about Mission Support and learn more at LivingLutheran.org/SOFIA.